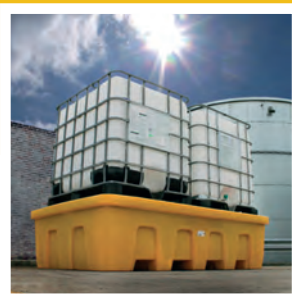




PRODUCT CATALOGUE

ENVIRONMENTAL / STORAGE / HEALTH & SAFETY / FIRE PROTECTION





Jonesco designs, develops and manufactures plastic products to provide innovative solutions. You, the customer, are the driving force behind this, which is why we have become a leading exponent of rotational moulding, providing reliable and durable commercial vehicle, fire protection, health & safety and secondary spill containment solutions to over 60 countries worldwide.

Our team of experienced engineers ensures we design and manufacture the most robust of products, which undergo only the most stringent test procedures to ensure compliance with major international regulations. With a global reputation for quality, Jonesco products can be found in the most challenging and harshest of environments guaranteeing security and performance for the end user time and again.

Jonesco's extensive range of products is manufactured from polyethylene (PE), unless stated otherwise. Non-corroding, resistant to most chemicals, UV stable, 100% recyclable and high impact strength - these properties combine to make polyethylene an ideal material for many applications.

Under most conditions, the UV resistance of our high quality polymer can be expected to support a service life of 10-15 years for natural or coloured products and 20-30 years on fully compounded black products. Food grade compliant colours available.

We pride ourselves on our ability to create premium quality solutions. Our Jonesco teams in Preston (UK) and Seclin (France) are available to support your requirements.



JONESCO développe et fabrique des produits plastiques dont la finalité est de vous fournir des solutions innovantes. Vous, le client, êtes au cœur de notre développement ; ce qui nous a permis de devenir un acteur majeur dans le domaine du rotomoulage et ainsi vous proposer des solutions fiables et durables sur le marché du Véhicule Industriel, de la Protection Incendie, de la Sécurité et de l'Environnement dans plus de 60 pays.

Afin de garantir la conformité de nos produits avec toutes les réglementations internationales majeures, notre département R&D procède à des test produits rigoureux avant leur commercialisation. Reconnus pour leur qualité, les produits Jonesco peuvent être utilisés dans tout type d'environnement, garantissant ainsi sécurité et performance pour l'utilisateur final.

La gamme de produits Jonesco est fabriquée en polyéthylène (PE), sauf indication contraire. Non corrosif, résistant à la plupart des produits chimiques, résistant aux UV, résistant aux chocs et 100% recyclable, le polyéthylène est le matériau idéal pour de multiples utilisations, grâce à ses propriétés.

Dans la plupart des cas et selon les bons paramètres de fabrication, la résistance aux UV de polymère haute qualité offre une durée de vie estimée de 10-15 ans pour les produits naturels ou colorés et de 20-30 ans pour les produits noirs. Des couleurs conformes aux normes alimentaires sont disponibles.

Créateur de solution PREMIUM, les équipes de Jonesco Preston (UK) et Seclin (France) sont à votre service pour vous accompagner dans l'étude, la réalisation et la concrétisation de vos différents projets.



PRESTON R&D & MANUFACTURING SITE



SECLIN DISTRIBUTION CENTRE

ESTABLISHED
COMPANY



FOUNDED
1967



FAMILY
BUSINESS



3 SITES



DISTRIBUTION
CENTRES

CUSTOMER
FOCUSED



CUSTOMER
SERVICE



OVER 60
COUNTRIES



OPTIMISED
LOADING



RELIABLE
DELIVERY

MANUFACTURING
EXPERTISE



QUALITY
DESIGN



ROTO-MOULDING
& EXTRUSION



IN-HOUSE
R&D



INNOVATIVE
SOLUTIONS

PRODUCT
QUALITY



100%
RECYCLABLE



UV
RESISTANT



CHEMICAL
RESISTANT



NESTABLE
RANGES

ENGINEERING
METHODS



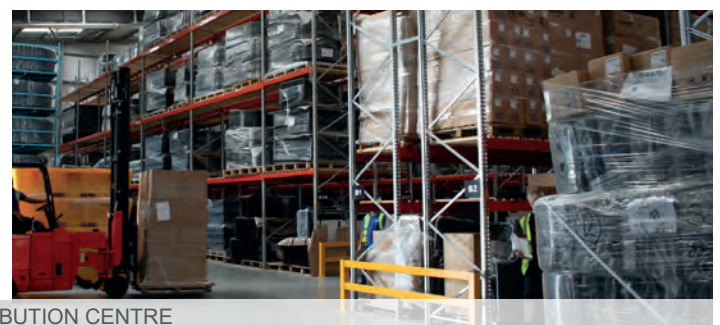
QUALITY
STANDARDS



DIBt
APPROVED



TESTED FOR WEIGHT AND
HYDROSTATIC LOADS



PRESTON DISTRIBUTION CENTRE

www.jonesco-plastics.com

CONTENTS

SPILL CONTAINMENT

Spill Trays • Drum Spill Pallets • Drum Funnel & Tray • Drum Rack • Drum Trolley • Hardcovers • Spill Workfloors •
IBC Spill Pallets • On-board Spill Containment

06-23

STORAGE BOXES

Mobile Display & Storage Unit • Mobile / Static Storage • Lockable Storage • Emergency Response Storage Box •
Small Storage Containers

24-33

HEALTH & SAFETY

Safety Boxes • Mobile First Aid Response Unit

34-39

FIRE PROTECTION

Fire Boxes • Military Grade Boxes • Break-Glass Key Access Boxes • Hose Reel Boxes • Mobile Fire Response Unit •
Fire Extinguisher Trolley • Utility Shelter • Fire Stands

40-59

PALLETISATION

Spill Containment • Storage Boxes • Health & Safety • Fire Protection

60-71

APPENDIX

Environmental Legislation • DIBt (Ü) • Customer Service • Conditions of Sale & Delivery

72-83





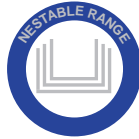
4 DRUM SPILL PALLET - SJ-100-007



SPILL CONTAINMENT

SPILL TRAYS	08
DRUM SPILL PALLETS	10
DRUM FUNNEL & TRAY	12
DRUM RACK DISPENSING STATION	13
DRUM TROLLEY	14
DRUM SPILL PALLET HARDCOVER	15
SPILL WORKFLOORS	16
IBC SPILL PALLETS	18
ON-BOARD SPILL CONTAINMENT	20
ACCESSORIES	22
PALLETISATION	62

SPILL TRAYS



A range of spill containment trays available in 20, 30, 40, 60 & 100 litre capacities in a variety of platform colours • Ideal for storing small containers of chemicals in laboratories, workshops, stores, universities, schools, garages, farms etc. • Platform with hand inserts and viewing gaps for inspections and / or pump insertion • Slip resistant platform surface • Can be used with or without platform • The unique nestable design saves storage space and optimises handling and delivery • Easy to clean • All trays black as standard • For our **DIBt (Ü)** range see page 78.

ST1-100-YE/GR/BK-BK: May be used to store a single 205 litre drum as its capacity exceeds 25% of the volume, in compliance with current UK regulations. For more information see page 74.



ST1-20-YE-BK & ST1-30-YE-BK



ST1-20-GR-BK



ST1-40-BK-BK



ST1-20-YE-BK ● ST1-20-GR-BK ●
ST1-20-BK-BK ●



ST1-60-B-BK



ST1-100-YE-BK

H x W x D (mm):	155 x 600 x 400
Platform (mm):	25 x 590 x 390
Weight (kg):	3
Capacity (ℓ):	20
Max load (kg):	50



ST1-20-B-BK ●

H x W x D (mm): 155 x 600 x 400
 Platform (mm): N/A
 Weight (kg): 2
 Capacity (ℓ): 28
 Max load (kg): N/A



ST1-30-YE-BK ● ST1-30-GR-BK ●
 ST1-30-BK-BK ●

H x W x D (mm): 155 x 805 x 405
 Platform (mm): 25 x 795 x 395
 Weight (kg): 4.5
 Capacity (ℓ): 30
 Max load (kg): 50



ST1-30-B-BK ●

H x W x D (mm): 155 x 805 x 405
 Platform (mm): N/A
 Weight (kg): 3
 Capacity (ℓ): 39
 Max load (kg): N/A



ST1-40-YE-BK ● ST1-40-GR-BK ●
 ST1-40-BK-BK ●

H x W x D (mm): 155 x 800 x 600
 Platform (mm): 40 x 790 x 590
 Weight (kg): 6.5
 Capacity (ℓ): 40
 Max load (kg): 100



ST1-40-B-BK ●

H x W x D (mm): 155 x 800 x 600
 Platform (mm): N/A
 Weight (kg): 3.5
 Capacity (ℓ): 60
 Max load (kg): N/A



ST1-60-YE-BK ● ST1-60-GR-BK ●
 ST1-60-BK-BK ●

H x W x D (mm): 175 x 1000 x 600
 Platform (mm): 40 x 990 x 590
 Weight (kg): 9
 Capacity (ℓ): 60
 Max load (kg): 200



ST1-60-B-BK ●

H x W x D (mm): 175 x 1000 x 600
 Platform (mm): N/A
 Weight (kg): 5
 Capacity (ℓ): 87
 Max load (kg): N/A



ST1-100-YE-BK ● ST1-100-GR-BK ●
 ST1-100-BK-BK ●

H x W x D (mm): 175 x 1200 x 800
 Platform (mm): 40 x 1190 x 790
 Weight (kg): 14
 Capacity (ℓ): 100
 Max load (kg): 210



ST1-100-B-BK ●

H x W x D (mm): 175 x 1200 x 800
 Platform (mm): N/A
 Weight (kg): 6.5
 Capacity (ℓ): 143
 Max load (kg): N/A

DRUM SPILL PALLETS

A range of spill containment pallets for 1, 2 and 4 drums with capacities from 230 to 485 litres • Ideal for static spill containment in factories, warehouses, farm stores, garages etc. • Durable, removable platform • Tested for weight and hydrostatic loads • Capacities meet / exceed European, UK and US regulations • Platform with hand inserts and viewing gaps for inspections and / or pump insertion • Compatible with most forklifts and pallet trucks (fork extensions may be needed) • Remove drums / containers and empty spill pallet before moving • All platforms black as standard • For optional extras and accessories see pages 22-23 • For our **DIBt (Ü)** range see page 78.

SJ-100-025: Heavy-duty spill pallet (36.5 kg) for substantial loads • Designed to take uniformly distributed load of 2000 kg • Blue as standard • Minimum order quantity: 20 pieces.

SJ-2E: EuroSump is a nestable spill pallet that fits **SJ-2E-PLAT** or a Euro-pallet (1200 x 800 mm) • It is the user's responsibility to ensure that any wooden or plastic pallets used with the **EuroSump** are sufficiently strong and free from structural defects.

SJ-110: The unique nestable design saves storage space and optimises handling and delivery • Generous surface area (1.8 m²).



SJ-100-025



SJ-100-006, JR1 (2) & JRB1



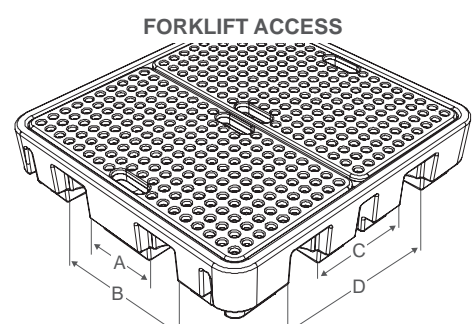
SJ-100-051



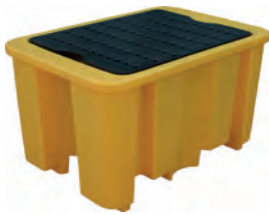
SJ-110-006



SJ-2E-BLK



FORKLIFT ACCESS



SJ-100-050 ● SJ-100-051 ●

H x W x D (mm):	600 x 1000 x 680
Platform (mm):	40 x 780 x 580
Weight (kg):	19.5
Capacity (ℓ):	230
A / B (mm):	200 / 690
C / D (mm):	N/A
Max load (kg):	400
205 ℓ drums:	1



SJ-100-001 ● SJ-100-002 ●

H x W x D (mm):	440 x 1300 x 750
Platform (mm):	55 x 1180 x 630
Weight (kg):	20.5
Capacity (ℓ):	250
A / B (mm):	190 / 815
C / D (mm):	N/A
Max load (kg):	650
205 ℓ drums:	2



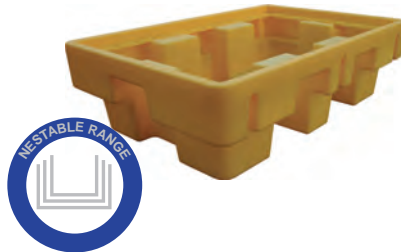
SJ-100-025 ●

H x W x D (mm):	440 x 1300 x 750
Platform (mm):	55 x 1180 x 630
Weight (kg):	36.5
Capacity (ℓ):	250
A / B (mm):	190 / 815
C / D (mm):	N/A
Max load (kg):	2000
205 ℓ drums:	2



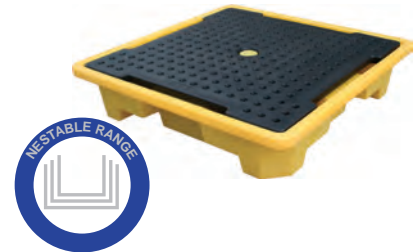
SJ-2E-PLAT ●

H x W x D (mm):	45 x 1215 x 815
Weight (kg):	8
205 ℓ drums:	2



SJ-2E-BLK ● SJ-2E-COYE ●

H x W x D (mm):	380 x 1310 x 910
Platform (mm):	N/A
Weight (kg):	16
Capacity (ℓ):	230
A / B (mm):	170 / 615
C / D (mm):	760 / 865
Max load (kg):	650
205 ℓ drums:	2



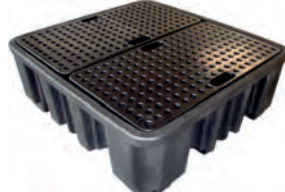
SJ-110-006 ● SJ-110-007 ●

H x W x D (mm):	305 x 1460 x 1460
Platform (mm):	50 x 1340 x 1340
Weight (kg):	37
Capacity (ℓ):	249
A / B (mm):	400 / 840
C / D (mm):	400 / 840
Max load (kg):	1250
205 ℓ drums:	4



SJ-100-006 ● SJ-100-007 ●

H x W x D (mm):	280 x 1380 x 1290
Platform (mm):	55 x 1180 x 630 (2)
Weight (kg):	31
Capacity (ℓ):	250
A / B (mm):	270 / 710
C / D (mm):	400 / 840
Max load (kg):	1250
205 ℓ drums:	4



SJ-100-010 ● SJ-100-011 ●

H x W x D (mm):	480 x 1380 x 1290
Platform (mm):	55 x 1180 x 630 (2)
Weight (kg):	41
Capacity (ℓ):	485
A / B (mm):	205 / 805
C / D (mm):	205 / 805
Max load (kg):	1250
205 ℓ drums:	4



SJ-100-060 ● SJ-100-061 ●

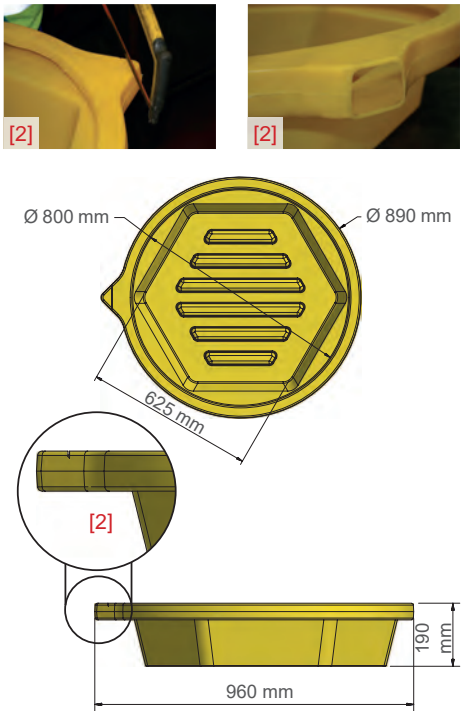
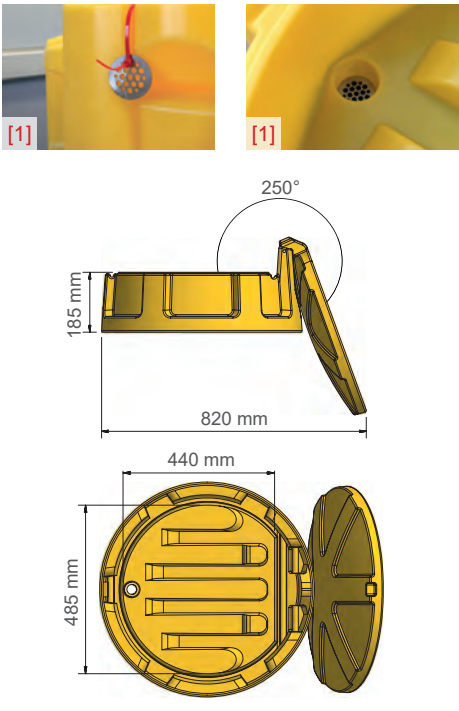
H x W x D (mm):	270 x 2445 x 660
Platform (mm):	40 x 780 x 580 (3)
Weight (kg):	34
Capacity (ℓ):	235
A / B (mm):	190 / 690
C / D (mm):	N/A
Max load (kg):	1250
205 ℓ drums:	4

DRUM FUNNEL & TRAY

The **DrumKlam** range not only makes pouring easier, it also offers affordable protection from drips, leaks and spills • Compatible with a standard 205 litre drum • Raised ribs allow parts / drums to stand above drained liquids.

SJ-600: Drum funnel with hinged lid prevents filling with rainwater & debris when not in use • Supplied with a stainless steel debris filter^[1] • 250° lid opening allowing full access to drainage bowl • With or without plastic toggle latch.

SJ-610: Drum tray • The unique nestable design saves storage space and optimises handling and delivery • Spout facility for dispensing drained liquids^[2].



SJ-600-001 ●



SJ-600-001/P ●



SJ-610-001 ● SJ-610-002 ●

Height (mm):	265
Diameter (mm):	620
Weight (kg):	3.8
Capacity (ℓ):	N/A
Plastic toggle:	x

Height (mm):	265
Diameter (mm):	620
Weight (kg):	3.8
Capacity (ℓ):	N/A
Plastic toggle:	✓

Weight (kg):	5
Capacity (ℓ):	86* / 54**

*Top of bowl
**Underside of spout

DRUM RACK DISPENSING STATION

The drum rack dispensing station offers a spill containment capacity of 450 litres with an optional second stacking level to accommodate up to 4 drums in total • Compatible with standard 205 litre drums • Ideal for easy dispensing and storage • Drum rack to be used with drum rack base only • Compatible with most forklifts and pallet trucks (fork extensions may be needed) • Remove drums before forklifting • For our **DIBt (Ü)** range see page 78.



SJ-200-002 & SJ-200-003



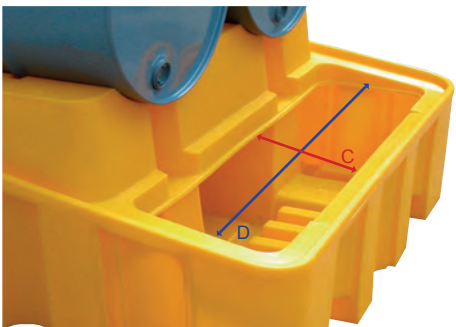
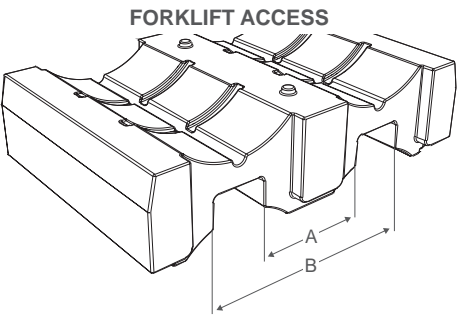
SJ-200-001 ● SJ-200-002 ●

H x W x D (mm):	390 x 1375 x 940
Weight (kg):	25
Capacity (ℓ):	N/A
A / B (mm):	430 / 840
C x D (mm):	N/A
Max load (kg):	1000
205 ℓ drums:	2



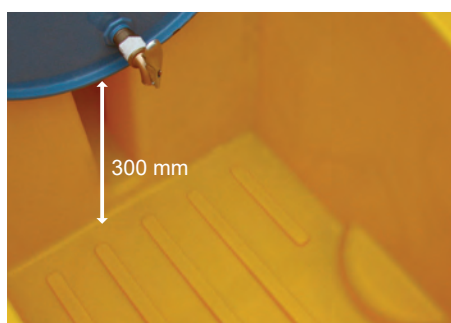
SJ-200-003 ● SJ-200-004 ●

H x W x D (mm):	635 x 1375 x 1350
Weight (kg):	46
Capacity (ℓ):	450
A / B (mm):	430 / 840
C x D (mm):	345 x 1185
Max load (kg):	1000
205 ℓ drums:	2



DRUM TROLLEY

DrumKart is a mobile dispensing unit with an integral 250 litre sump • Compatible with a standard 205 litre drum • Easy to handle • Easy to clean, liquid drains to the front • Rubber wheels as standard • Barrel secured with ratchet strap • Large ribbed dispensing area, ideal for containers to sit above minor spills • Spill capacity of 3 litres when vertical^[1] • Castors with rotation and swivel brake • The safety support locks into place for easy vertical loading and storage • Two foot recesses positioned for easy tipping and handling.



SJ-400-001 ● SJ-400-003 ●

H x W x D (mm):	680 x 1740 x 815
Weight (kg):	41
Capacity (ℓ):	250
Max load (kg):	300
205 ℓ drums:	1



DRUM SPILL PALLET HARDCOVER

SpillShak, a range of 2 and 4 drum spill pallets with hardcover - Rigid and double walled to provide weathertight storage • Tall headspace easily accommodates rotary pump equipment and conical funnels • Access to both sides via two sliding shutters • Compatible with most forklifts and pallet trucks (fork extensions may be needed) • Remove drums / containers and empty spill pallet before moving • Supplied with a stainless steel fixing kit as standard • Easy assembly • Can be bolted to the ground • Two side panels with 2 storage compartments each (2 compartment covers supplied as standard) • Can be padlocked (padlock not supplied) • All shutters black as standard • For optional extras and accessories see pages 22-23 • Available with **DIBt** approved spill pallets • For our **DIBt** (Ü) range see page 78 • **SJC2**: Delivered assembled • **SJC4 & SJC45**: Delivered flat packed.



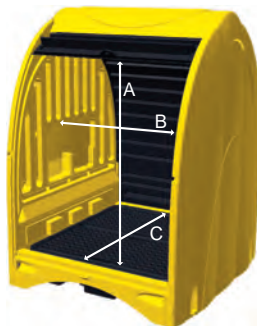
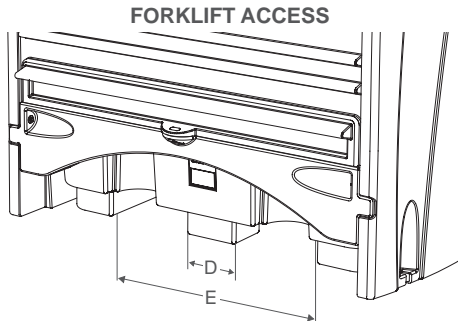
SJC4-YE-BK-B-F



SJC2-YE-BK-B-A, JR1 (3) & JRB1 (3)



SJC45-YE-BK-B-F, JR1 (3) & JRB1 (3)



SJC2-YE-BK-B-A ●



SJC4-YE-BK-B-F ●



SJC45-YE-BK-B-F ●

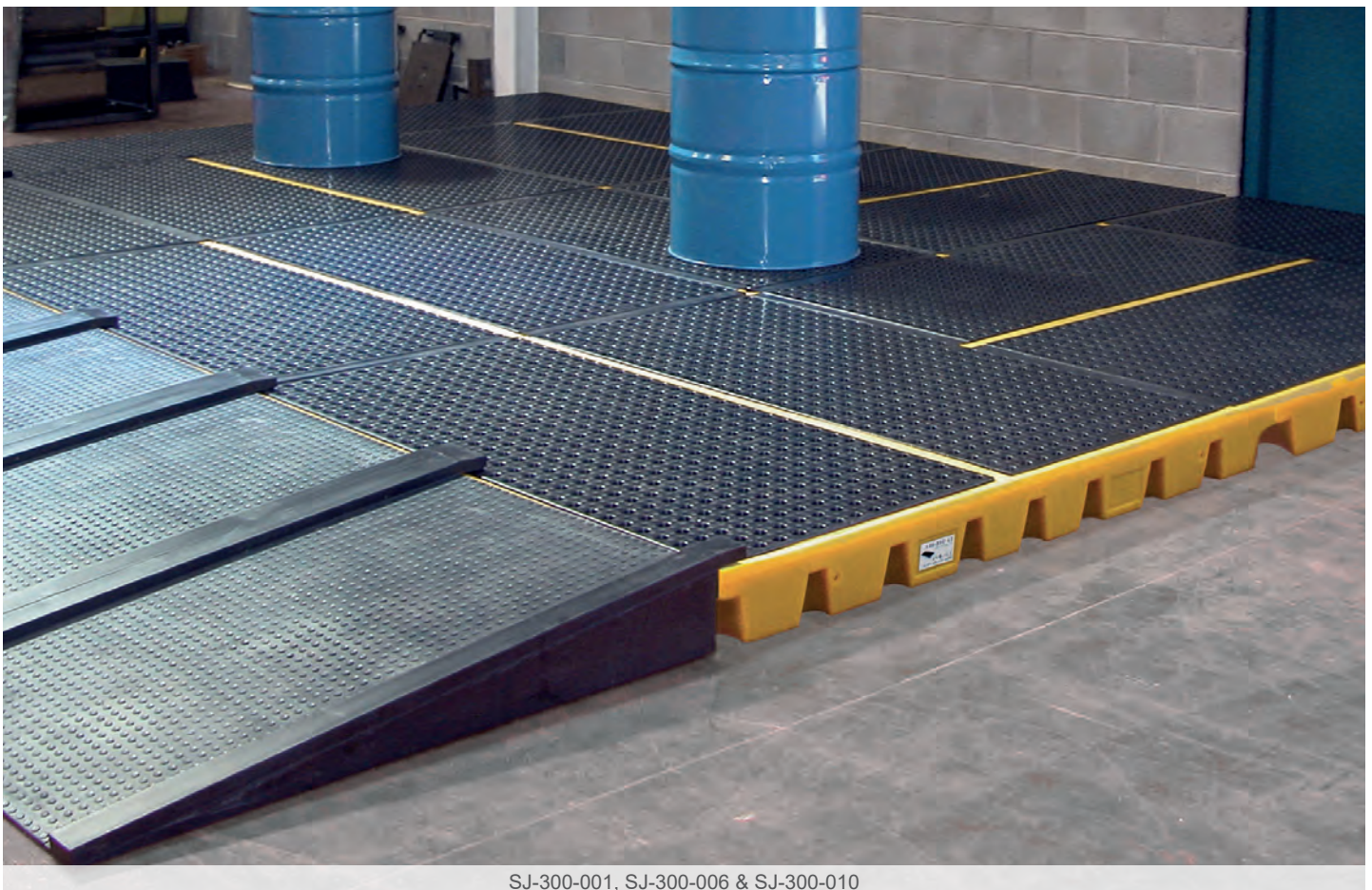
H x W x D (mm):	2110 x 1565 x 995
A x B x C (mm):	1350 x 1240 x 800
Spill Pallet:	SJ-100-001 ●
Platform (mm):	55 x 1180 x 630
Weight (kg):	101.5
Capacity (ℓ):	250
D / E (mm):	190 / 815
205 ℓ drums:	2

H x W x D (mm):	2110 x 1565 x 1620
A x B x C (mm):	1510 x 1210 x 1440
Spill Pallet:	SJ-100-007 ●
Platform (mm):	55 x 1180 x 630 (2)
Weight (kg):	148
Capacity (ℓ):	250
D / E (mm):	270 / 710
205 ℓ drums:	4

H x W x D (mm):	2110 x 1565 x 1620
A x B x C (mm):	1310 x 1210 x 1440
Spill Pallet:	SJ-100-010 ●
Platform (mm):	55 x 1180 x 630 (2)
Weight (kg):	158
Capacity (ℓ):	485
D / E (mm):	205 / 805
205 ℓ drums:	4

SPILL WORKFLOORS

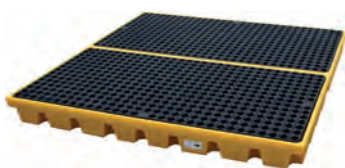
The flexible workflow system is the ideal solution for liquid storage and dispensing areas where frequent access to containers is required • Large (1600 x 1600 mm) and small (800 x 1600 mm) workflow units and ramps can be combined and connected in different ways to suit the application • Large unit complies with UK European spill pallet regulations • Units can be joined together with workflow connectors, **WIN-A272**, **WIN-A728** & **KIT102**, to expand the workflow area • Access ramp locks onto workflow with integrated locating pins • Robust and extremely stable • Strong, removable polyethylene platform • Slip resistant texture • All platforms black as standard • For optional extras and accessories see pages 22-23 • For our **DIBt (Ü)** range see page 78.





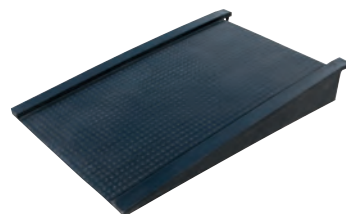
SJ-300-001 ● SJ-300-002 ●

H x W x D (mm): 150 x 1600 x 800
 Platform (mm): 60 x 1555 x 755
 Weight (kg): 24.5
 Capacity (ℓ): 112
 Max load (kg): 1000
 205 ℓ drums: 2



SJ-300-006 ● SJ-300-007 ●

H x W x D (mm): 150 x 1600 x 1600
 Platform (mm): 60 x 1555 x 755 (2)
 Weight (kg): 45
 Capacity (ℓ): 232
 Max load (kg): 2000
 205 ℓ drums: 4



SJ-300-010 ●

H x W x D (mm): 180 x 810 x 1290
 Weight (kg): 15
 Max load (kg): 500



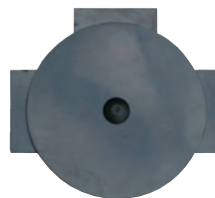
WIN-A727 ●

H x W x D (mm): 40 x 1500 x 40



WIN-A728 ●

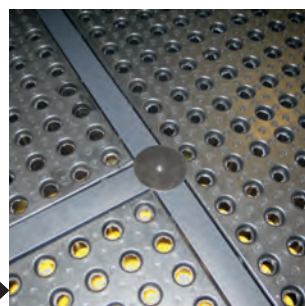
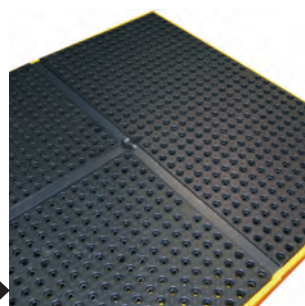
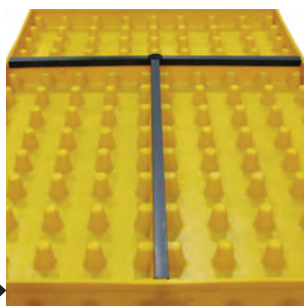
H x W x D (mm): 40 x 700 x 40



KIT102 ●

W x D (mm): 150 x 125
 Diameter (mm): 140

CONNECTOR KIT STEP BY STEP



IBC SPILL PALLETS

Efficient secondary spill containment solution for 1 or 2 IBCs • Available with or without platforms and dispensing stations • Central support always to be used when platform is in place • Tested for weight and hydrostatic loads • Compatible with most forklifts and pallet trucks (fork extensions may be needed) • Platform with hand inserts and viewing gaps for inspections and / or pump insertion • Remove IBC and empty spill pallet before moving • Capacities meet / exceed European, UK and US regulations • IBCs must always be facing forward, not to the side, when using a double spill pallet^[1] • All platforms black as standard • All central supports red as standard • For optional extras and accessories see pages 22-23 • For our **DIBt (Ü)** range see page 78.

SJ-510 & SJ-520: The unique nestable design saves storage space and optimises handling and delivery.

SJ-510: Generous surface area (2.5 m²).

SJ-500-005/006 & SJ-525: Can be used with or without platform.

SJ-545 PLATFORMLESS SPILL PALLET: Low height for ease of use (575 mm) • Compatible with pallet stacker trucks, not compatible with pallet trucks • 32 mm drop onto support surface.

SJ-525: Integrated dispensing area with a raised 10 litre mini sump.

SJ-510-095 & SJ-520-095: Only for use in bunded areas.



SJ-520-001



SJ-510-001 & SJ-510-003



SJ-500-001 & SJ-500-007



SJ-545-YE & SJ-500-008 (2)



IBCs FACING FORWARD



IBCs FACING TO THE SIDE

SJ-500-001 ● SJ-500-002 ●

H x W x D (mm):	1000 x 1450 x 1450
Platform (mm):	50 x 1340 x 1340
Weight (kg):	95
Capacity (ℓ):	1120
A / B (mm):	160 / 665
C / D (mm):	N/A
Max load (kg):	2000
IBC:	1

SJ-500-005 ● SJ-500-006 ●

H x W x D (mm):	1000 x 1450 x 1450
Platform (mm):	N/A
Weight (kg):	74
Capacity (ℓ):	1120
A / B (mm):	160 / 665
C / D (mm):	N/A
Max load (kg):	2000
IBC:	1



SJ-510-001 ● SJ-510-002 ●

H x W x D (mm):	700 x 1680 x 1680
Platform (mm):	90 x 1585 x 1585
Weight (kg):	86
Capacity (ℓ):	1260
A / B (mm):	180 / 710
C / D (mm):	180 / 710
Max load (kg):	2500
IBC:	1



SJ-510-095 ●

H x W x D (mm):	695 x 1585 x 1585
Platform (mm):	90 x 1585 x 1585
Weight (kg):	53
Capacity (ℓ):	N/A
A / B (mm):	120 / 785
C / D (mm):	120 / 785
Max load (kg):	2500
IBC:	1



SJ-525-BK-YE ● SJ-525-BK-BK ●

H x W x D (mm):	750 x 2000 x 1490
Platform (mm):	50 x 1335 x 1335
Weight (kg):	112
Capacity (ℓ):	1120
A / B (mm):	230 / 670
C / D (mm):	N/A
Max load (kg):	2000
IBC:	1



SJ-525-B-YE ● SJ-525-B-BK ●

H x W x D (mm):	750 x 2000 x 1490
Platform (mm):	N/A
Weight (kg):	91
Capacity (ℓ):	1120
A / B (mm):	230 / 670
C / D (mm):	N/A
Max load (kg):	2000
IBC:	1



SJ-500-003 ● SJ-500-004 ●

H x W x D (mm):	575 x 2450 x 1450
Platform (mm):	50 x 1340 x 1340 (2)
Weight (kg):	119
Capacity (ℓ):	1130
A / B (mm):	175 / 825
C / D (mm):	335 / 820
Max load (kg):	4000 (2000 per side)
IBC:	2



SJ-520-001 ● SJ-520-002 ●

H x W x D (mm):	575 x 2260 x 1465
Platform (mm):	90 x 1080 x 1365 (2)
Weight (kg):	116
Capacity (ℓ):	1200
W / X (mm):	180 / 710
Y / Z (mm):	1060 / 1480
Max load (kg):	3000 (1500 per side)
IBC:	2



SJ-520-095 ●

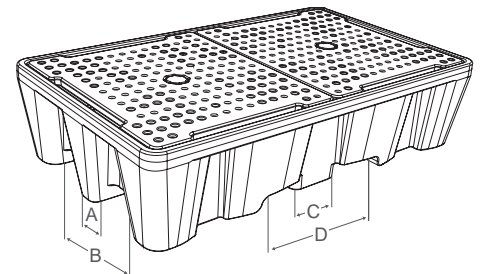
H x W x D (mm):	570 x 2165 x 1365
Platform (mm):	90 x 1080 x 1365 (2)
Weight (kg):	86
Capacity (ℓ):	N/A
W / X (mm):	130 / 765
Y / Z (mm):	1015 / 1640
Max load (kg):	3000 (1500 per side)
IBC:	2



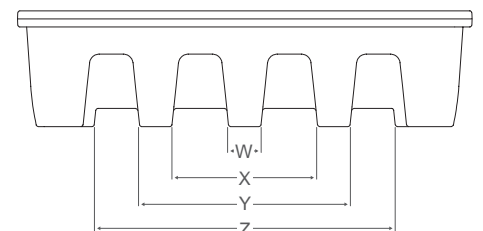
SJ-545-YE ● SJ-545-BLK ●

H x W x D (mm):	575 x 2300 x 1360
Platform (mm):	N/A
Weight (kg):	75
Capacity (ℓ):	1238
W / X (mm):	415 / 935
Y / Z (mm):	1320 / 1850
Max load (kg):	3000 (1500 per side)
IBC:	2

FORKLIFT ACCESS



FORKLIFT FRONT ACCESS ONLY



ON-BOARD SPILL CONTAINMENT

The **AWAYWASH** range offers on-board spill containment capacity of 45 and 55 litres for ready-mix concrete truck chute washout • Lighter than metal alternatives, sturdy and easy to maintain as concrete does not adhere to it • The unique design collects the washout waste and separates the coarse material in a robust sieve designed for easy emptying • No mechanical parts that could jam or require costly maintenance • Spare parts (sieve & hose) available.

PROTECTS THE ENVIRONMENT: Avoids washout water spillage on the ground • Prevents alkaline pollution and soiling at the delivery point • Removes harmful washout water from construction sites • Prevents contamination of underground and surface water • Allows the catching and re-using of washout water • Supports sustainable development policies • Facilitates compliance with environmental regulations.

ECONOMICAL: Separates aggregates from water for easily quantified recycling of solids^[1] • Reduces water consumption: allows batching plants to re-use the washout water • Reduces water treatment / disposal related costs.

FUNCTIONAL: Can be retrofitted • Time saving: no waiting at washout areas on work sites • Easy to install, handle and use.

PRODUCT FEATURES AS STANDARD: Tray with integrated sieve with incorporated handles acts as a water baffle during transit and prevents any water escaping • 750 mm flexible hose for easy emptying • Built-in fixing points (M8 x 15) offer various fitment options • Conspicuity tape applied.



CCRT-TS-YE

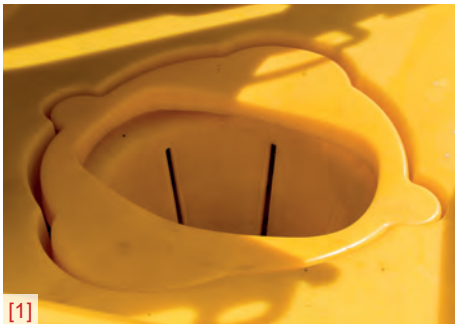


CCRT-TS-YE ●

CCRT2-TS-YE ● CCRT2-TS-BK ●

H x W x D (mm): 525 x 1860 x 760
 Weight (kg): 21.5
 Capacity (ℓ): 55
 Tray: ✓
 Sieve: ✓
 Hose: ✓

H x W x D (mm): 500 x 610 x 560
 Weight (kg): 11
 Capacity (ℓ): 45
 Tray: ✓
 Sieve: ✓
 Hose: ✓



[1]



[1]



[1]



CCRT2-TS-YE



CCRT-TS-YE



CCRT2-TS-YE



CCRT-TS-YE

SPILL CONTAINMENT ACCESSORIES

IBC DISPENSERS: When full overflows into IBC spill pallet • **SJ-500-007:** Must be used with base.

MODULAR RAMPS: Universal ramp & block modules for sump and spill storage units of different heights • Quick, easy and safe to handle by one person • Accommodates most trolley widths • Ergonomic slope angle of 11° • Integrated locking system for added safety • Strong and robust for industrial use • Slip resistant texture.

PVC CONNECTOR KIT: For Jonesco drum spill pallets & workfloors • 1 x $\frac{3}{4}$ " BSP straight connector • 4 x nitrile rubber (NBR) washers • 1 x $\frac{3}{4}$ " BSP nut • Unsuitable for IBC spill pallets • Not approved for use in all jurisdictions - check local regulations.

PVC DRAIN / TAP KIT: Compatible with various Jonesco spill containment products • 1 x tap valve with female $\frac{3}{4}$ " BSP • 1 x removable tap head • 2 x nitrile rubber (NBR) washers • 1 x $\frac{3}{4}$ " BSP straight connector • 1 x $\frac{3}{4}$ " BSP nut • Not approved for use in all jurisdictions - check local regulations.



IBC DISPENSERS



SJ-500-007 ●

H x W x D (mm): 1065 x 640 x 590
Weight (kg): 13
Capacity (ℓ): 100
Compatible with: SJ-500-001 / 002
SJ-500-005 / 006



SJ-500-008 ●

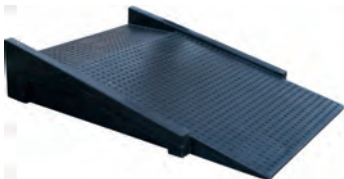
H x W x D (mm): 665 x 640 x 590
Weight (kg): 8
Capacity (ℓ): 100
Compatible with: SJ-500-003 / 004
SJ-520-001 / 002
SJ-545-YE / BLK



SJ-510-003 ●

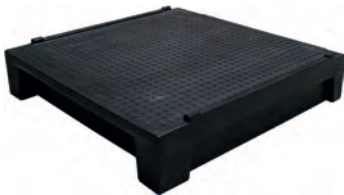
H x W x D (mm): 790 x 640 x 590
Weight (kg): 9
Capacity (ℓ): 100
Compatible with: SJ-510-001 / 002

MODULAR RAMPS



JR1 ●

H x W x D (mm): 150 x 750 x 1000
Weight (kg): 9
Max load (kg): 250

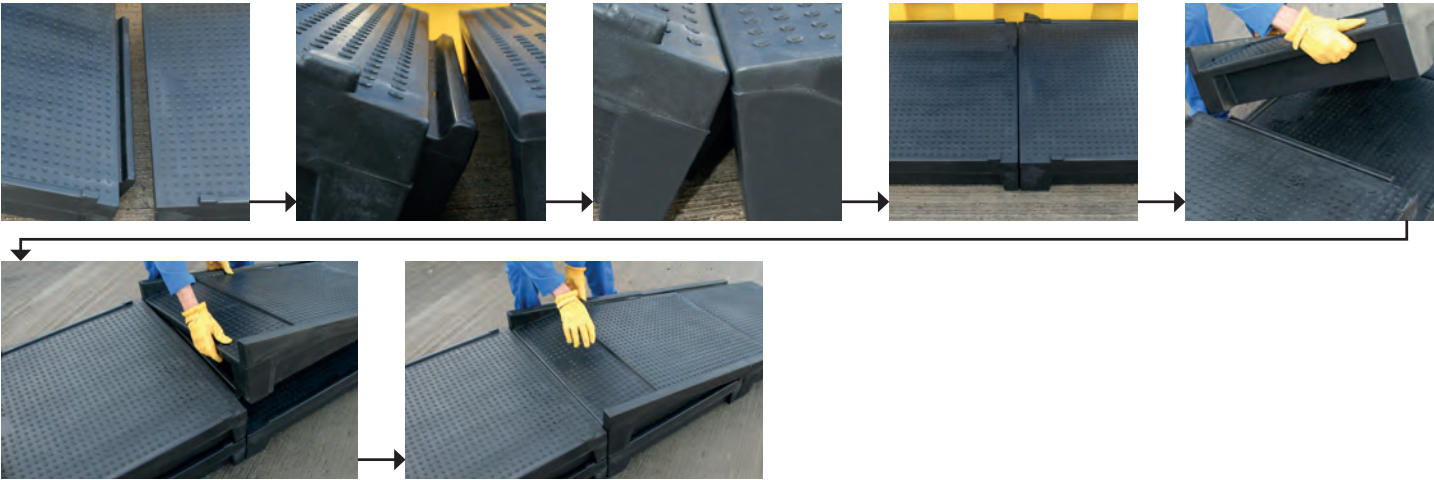


JRB1 ●

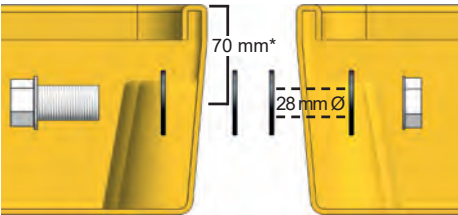
H x W x D (mm): 165 x 750 x 795
Weight (kg): 9
Max load (kg): 250

	UNITS REQUIRED			
	JR1	JRB1	H (mm)	W (mm)
SJ-300-001 / 002	1	-	150	1000
SJ-300-006 / 007				
SJ-100-060 / 061	2	1	300	1750
SJ-100-006 / 007				
SJ-110-006 / 007				
SJC4-YE-BK-B-F				
SJ-100-001 / 002	3	3	450	2500
SJ-100-010 / 011				
SJC2-YE-BK-B-A				
SJC45-YE-BK-B-F				

MODULAR RAMP STEP BY STEP



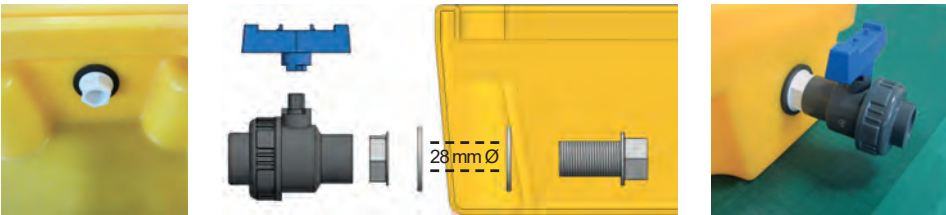
CONNECTOR KIT



JC6 ○

*Top of the bund to hole centre

DRAIN / TAP KIT



JC7 ●





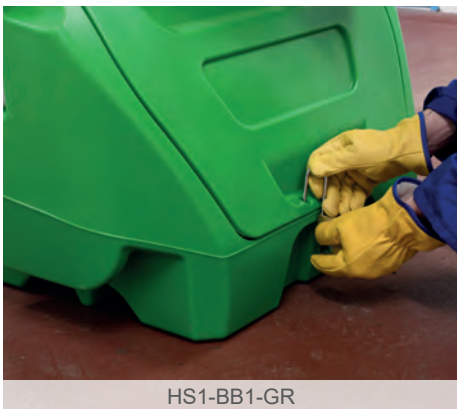
STORAGE BOXES

MOBILE DISPLAY & STORAGE UNIT	26
MOBILE / STATIC STORAGE	28
LOCKABLE STORAGE	30
EMERGENCY RESPONSE STORAGE BOX	32
SMALL STORAGE CONTAINERS	33
ACCESSORIES	56
PALLETISATION	66

MOBILE DISPLAY & STORAGE UNIT

SitePoint is a multi-purpose mobile unit offering 100 litre storage capacity and display panel of 1060 x 580 mm • Highly customisable with Jonesco and third-party products to provide information and access to PPE, first aid, eye wash, fire extinguishers, spill control, lock-outs, etc. See our small container (p. 33), safety (p. 34) & fire (p. 40) ranges • Consumables sold separately • Suitable for indoor / outdoor use • Easy to assemble and disassemble • Large opening for easy access • Angled lid allows water to run off • Easy to clean • Stackable for easy transportation • Compatible with most forklifts • Ergonomic handles for ease of use • Solid rubber wheels (Ø 200 mm)^[1] • Generous mounting space^[2] • Tethering points^[3] • Foot recess to aid tipping and handling^[4] • 3 ground anchor points in the base^[5] • Lockable compartment (padlock not supplied) • Rubber seal and plastic toggle option • Laser logo service available • Backboard natural / white as standard.

When mounting accessories to the backboard use self-tapping screws. For heavier items bolt through the backboard, using suitable fixings and washers. Maximum weight for fixing products / consumables to the backboard: 8 kg each side uniformly distributed. In some circumstances, the **SitePoint** may need to be tethered or anchored to the ground, or weighed down with ballast, such as sand bags or concrete blocks.



HS1-BB1-GR



HS1P-BB1-YE



HS1P-BB1-YE



HS1-BB1-GR (2), JBKA70, HS1-BB1-B2, HS1NL-BB1-RE, JFEX03, 1005-CORE, JHSA1 & HS1P-BB1-YE



HS1-BB1-YE  HS1-BB1-RE 
 HS1-BB1-GR  HS1-BB1-B2 

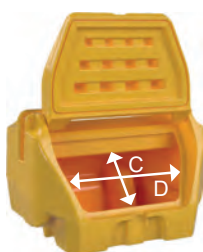
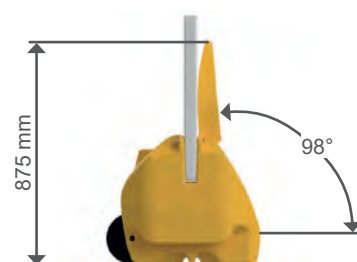
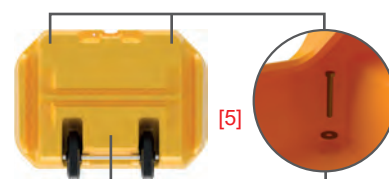
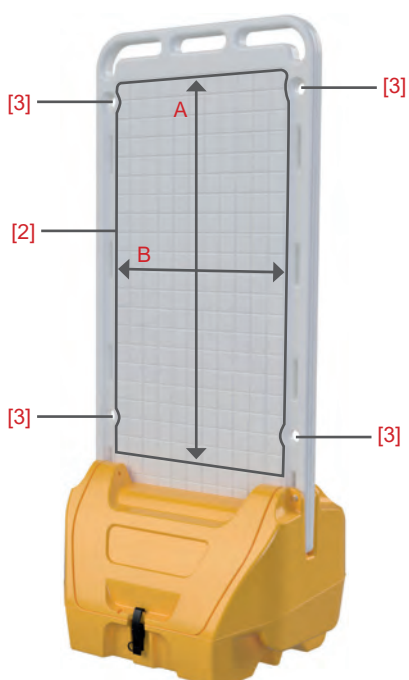
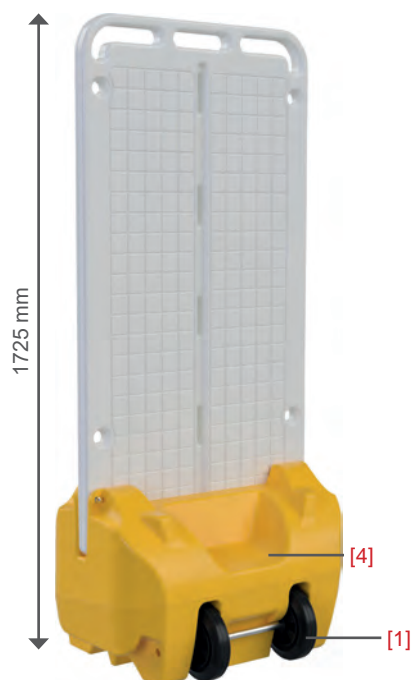
HS1P-BB1-YE  HS1P-BB1-RE 
 HS1P-BB1-GR  HS1P-BB1-B2 

HS1NL-BB1-RE 

H x W x D (mm): 1725 x 755 x 595
 Weight (kg): 26.5
 Capacity (ℓ): 100
 Forklift access: ✓
 A x B (mm): 1060 x 580
 C x D (mm): 265 x 570
 Plastic toggle: ✗

H x W x D (mm): 1725 x 755 x 595
 Weight (kg): 26.5
 Capacity (ℓ): 100
 Forklift access: ✓
 A x B (mm): 1060 x 580
 C x D (mm): 265 x 570
 Plastic toggle: ✓

H x W x D (mm): 1725 x 755 x 595
 Weight (kg): 26.5
 Capacity (ℓ): 100
 Forklift access: ✓
 A x B (mm): 1060 x 580
 C x D (mm): 265 x 570
 Plastic toggle: N/A



MOBILE / STATIC STORAGE

Versatile, robust and durable containers with capacities from 75 to 500 litres • Ideal for sand, salt, absorbents and general storage indoors and out • Angled lid allows water to run off • Heavy-duty • Large opening for easy access • Proven use in many climates from -35°C to +50°C • Laser logo service available for **WJ75, JBS110, JBS130, JBS200 & JBS400R** • Other colours available upon request - Min. order 10 pieces • For optional extras and accessories see pages 56-59.

WJ75: UniKart - A mobile unit for multiple applications • Solid rubber wheels (Ø 200 mm) • Ergonomic handle for ease of use • Lid can be secured in vertical position for convenient dispensing / loading • Easy handling • Can be padlocked (padlock not supplied).

JBS130 & JBS200: Space saving & slim-line, designed for optimal wall placement • Nestable, for optimised transportation.

JBS400: Ideal for general storage • Not suitable for salt, grit or sand • Stackable.

JBS500: User assembled lid • Cam lock, lid restraining straps & knob supplied as standard (KIT105) • Can be padlocked (padlock not supplied) • Nestable for optimised transportation • Available in International Orange for use as a container for OPA 90 (Oil Pollution Act, USA) compliant marine spill kits.

JBS500B: Suitable for general waste stream • Unsuitable for liquids • Nestable for optimised transportation.



JBS110-COYE



JBS500-COYE



JBS400R-COYE



WJ75-CORE



WJ75-COYE ● WJ75-CORE ●
WJ75-COGR ●

H x W x D (mm):	1070 x 590 x 435
Weight (kg):	11
Capacity (ℓ):	75
Forklift access:	×
A / B (mm):	N/A
C x D (mm):	350 x 450
Plastic toggle:	×



WJ75P-COYE ● WJ75P-CORE ●
WJ75P-COGR ●

H x W x D (mm):	1070 x 590 x 435
Weight (kg):	11
Capacity (ℓ):	75
Forklift access:	×
A / B (mm):	N/A
C x D (mm):	350 x 450
Plastic toggle:	✓



JBS110-COYE ● JBS110-CORE ●

H x W x D (mm):	570 x 650 x 500
Weight (kg):	9.5
Capacity (ℓ):	110
Forklift access:	×
A / B (mm):	N/A
C x D (mm):	380 x 560
Plastic toggle:	×



JBS110P-COYE ● JBS110P-CORE ●

H x W x D (mm):	570 x 650 x 500
Weight (kg):	9.5
Capacity (ℓ):	110
Forklift access:	×
A / B (mm):	N/A
C x D (mm):	380 x 560
Plastic toggle:	✓



JBS130-COYE ● JBS130-CORE ●
JBS130-COGR ●

H x W x D (mm):	750 x 850 x 500
Weight (kg):	13
Capacity (ℓ):	130
Forklift access:	✓
A / B (mm):	145 / 465
C x D (mm):	370 x 745
Plastic toggle:	×



JBS200-COYE ●

H x W x D (mm):	885 x 1005 x 590
Weight (kg):	17
Capacity (ℓ):	200
Forklift access:	✓
A / B (mm):	145 / 465
C x D (mm):	430 x 875
Plastic toggle:	×



JBS400-COYE ●

H x W x D (mm):	790 x 1200 x 600
Weight (kg):	22.5
Capacity (ℓ):	400
Forklift access:	✓
A / B (mm):	200 / 800
C x D (mm):	410 x 1110
Castor kit:	KIT103
Plastic toggle:	✓



JBS400R-COYE ●

H x W x D (mm):	885 x 1000 x 755
Weight (kg):	24.5
Capacity (ℓ):	400
Forklift access:	✓
A / B (mm):	170 / 440
C x D (mm):	420 x 880
Castor kit:	KIT103
Plastic toggle:	×



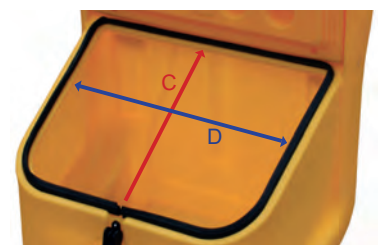
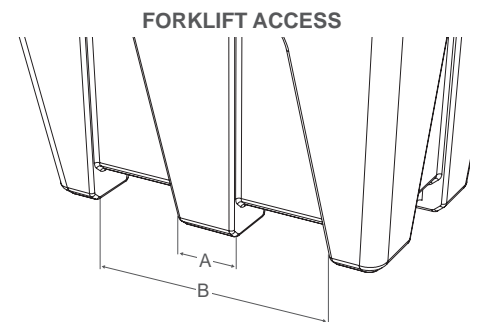
JBS500-COYE ● JBS500-COOR ●

H x W x D (mm):	830 x 1265 x 850
Weight (kg):	22
Capacity (ℓ):	500
Forklift access:	✓
A / B (mm):	190 / 660
C x D (mm):	710 x 1120
Castor kit:	KIT103
Plastic toggle:	×



JBS500B-COYE ● JBS500B-COOR ●

H x W x D (mm):	740 x 1265 x 850
Weight (kg):	16
Capacity (ℓ):	500
Forklift access:	✓
A / B (mm):	190 / 660
C x D (mm):	710 x 1120
Castor kit:	KIT103
Plastic toggle:	×



LOCKABLE STORAGE

The **TigaBox** range features key-operated lock(s) for secure storage with capacities from 42 to 172 litres • Also suitable for vehicle fitment • Lid sits in a recess to minimise the potential for water ingress • Additional protection through automotive grade rubber seal • Handles flip up into horizontal position and allow for easy unlocking even with gloved hands^[1] • Handles with integrated lock dust cover^[2] • Handles flip down into a recess to prevent damage and accidental opening^[3] • Lid opens 180° • No protruding parts • Laser logo service available • Other colours available upon request - Min. order 10 pieces • Fixing kits available upon request see pages 56-59.



JBZ900



JBZ520 ●

H x W x D (mm):	320 x 520 x 360 (external)
H x W x D (mm):	270 x 450 x 265 (internal)
Weight (kg):	4
Capacity (ℓ):	42
A / B / C / D (mm):	470* x 190 x 120 x 0
E x F (mm):	220 x 430
Logo plate (mm):	198 x 99
Fixing kit:	×



JBZ600 ●

H x W x D (mm):	450 x 600 x 480 (external)
H x W x D (mm):	405 x 520 x 385 (internal)
Weight (kg):	7
Capacity (ℓ):	98
A / B / C / D (mm):	555* x 280 x 105 x 0
E x F (mm):	350 x 505
Logo plate (mm):	198 x 99
Fixing kit:	×



JBZ700 ●

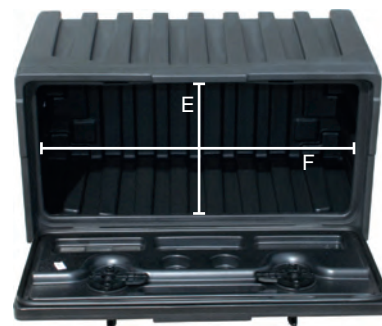
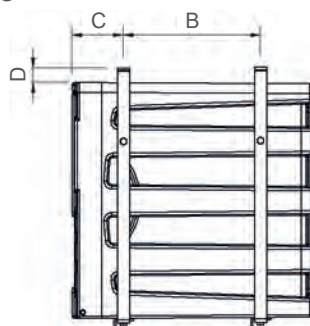
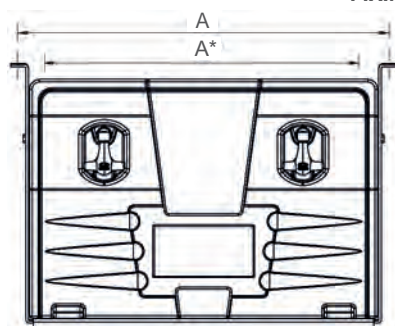
H x W x D (mm):	480 x 700 x 490 (external)
H x W x D (mm):	430 x 640 x 400 (internal)
Weight (kg):	8
Capacity (ℓ):	132
A / B / C / D (mm):	745 x 280 x 105 x 30
E x F (mm):	380 x 610
Logo plate (mm):	198 x 99
Fixing kit:	KIT35



JBZ900 ●

H x W x D (mm):	480 x 900 x 490 (external)
H x W x D (mm):	430 x 840 x 395 (internal)
Weight (kg):	11
Capacity (ℓ):	172
A / B / C / D (mm):	945 x 280 x 105 x 30
E x F (mm):	380 x 810
Logo plate (mm):	198 x 99
Fixing kit:	KIT36

FIXING POSITIONS



EMERGENCY RESPONSE STORAGE BOX

A storage box with 110 litre capacity specifically designed for rapid emergency response • Ideal for heliport rescue equipment (ICAO Annex 14 Vol II - Heliport Manual 6.9) • Can also be used for general storage • Stainless steel handles for easy manoeuvrability • Plastic toggles, lynch pins, hinge pins and rubber seal supplied as standard • Laser logo service available • Crash kit not supplied.



JBB80P-COOR



JBB80P-COOR



JBB80P-COOR

JBB80P-COOR ●

H x W x D (mm):	500 x 800 x 480 (external)
H x W x D (mm):	400 x 720 x 410 (internal)
Weight (kg):	10
Capacity (ℓ):	138
A x B (mm):	380 x 710
Logo plate (mm):	198 x 99

SMALL STORAGE CONTAINERS

A range of secure circular and square storage containers • Ideal for indoor / outdoor use and on board commercial vehicles • Suitable to store transit documents (A4 & US letter), Hazmat Safety Data as per ADR regulations, emergency throwing line, small utensils, first aid supplies etc.

1005: The lid is connected to the body by a small length of chain • A rubber seal between the lid and body protects from water ingress • Easy fitment with two 8 mm threaded holes • Also fits A3 documents • Lid is always black.

1006: Can be padlocked (padlock not supplied) • Lid opens 180° • Smooth finish for label placement • Also fits A4 folders • Other colours available upon request - Min order 20 pieces.

1008: Made from recyclable, chemical resistant polypropylene (PP) • The lid is connected to the body by a small length of chain • Available in black.



1005-CORE



1006-CORE



1008

FIXING POSITIONS



1005 ● 1005-CORE ● 1005-COGR ●
1005-COGY ●

1006 ● 1006-CORE ●

1008 ●

H x W (mm): 345 x 155
Internal H (mm): 340
Internal Dia (mm): 100
External Dia (mm): 125
Weight (kg): 0.54
Capacity (ℓ): 3

H x W x D (mm): 335 x 355 x 100 (external)
H x W x D (mm): 320 x 270 x 65 (internal)
Weight (kg): 1
Capacity (ℓ): 6

H x W (mm): 400 x 115
Internal H (mm): 350
Internal Dia (mm): 85
External Dia (mm): 100
Weight (kg): 0.40
Capacity (ℓ): 1



SitePoint RESPONSE UNIT - HS1-BB1-GR



HEALTH & SAFETY

SAFETY BOXES	36
MOBILE FIRST AID RESPONSE UNIT	38
ACCESSORIES	56
PALLETISATION	68

SAFETY BOXES

An extensive range of front and top loading safety boxes, ideal for indoor / outdoor storage of breathing apparatus (see pages 56-57 for SCBA bracket), chemicals and spillage equipment plus much more • Available in a choice of sizes and access options • Access options: plastic toggles and lynch pins^[1] OR plastic locks and key compartment with break-glass facility^[2] (2 keys, 2 clear plates and 2 fasteners supplied for self-assembly) OR 'T' handle door lock for SERIES 85 only^[3] • Can be wall mounted or free-standing • Rubber seal and polycarbonate windows • Left or right hinged mounting • Casing black as standard • Allow extra 20 mm external width for all green toggled boxes • For optional extras and accessories see pages 56-59.

BREAK-GLASS FITMENT: The key for the cabinet is located behind a clear plate, which is held in place with two plastic fasteners. In an emergency, the clear plate can be broken away, providing access to the key for the cabinet. A new clear plate can be re-attached using the same plastic fasteners.

OPTIONAL FACTORY FITTED ALARM: A reed switch activated 95 dB self-contained 9 V alarm with three minute automatic reset upon activation. Alarm does not interfere with use of equipment. To order, add the letter 'A' after a part number, e.g. JBKA70A.



JBKA83



JBDA72



JBDA85



JBDA72



SERIES 70

JBKA70 ● JBWA70 ●

H x W x D (mm): 700 x 300 x 255 (external)
H x W x D (mm): 625 x 260 x 195 (internal)
Weight (kg): 4
Break-glass: JBKA70
Plastic toggles: JBWA70
'T' handle: x
Labels:
Shelves: JBWA70 (2)



SERIES 72

JBKA72 ● JBDA72 ●

H x W x D (mm): 720 x 565 x 270 (external)
H x W x D (mm): 650 x 530 x 210 (internal)
Weight (kg): 8
Break-glass: JBKA72
Plastic toggles: JBDA72
'T' handle: x
Labels:
Shelves: JBDA72 (2)



SERIES 83

JBKA83 ● JBXA83 ●

H x W x D (mm): 830 x 310 x 265 (external)
H x W x D (mm): 750 x 270 x 220 (internal)
Weight (kg): 5.5
Break-glass: JBKA83
Plastic toggles: JBXA83
'T' handle: x
Labels:
Shelves: JBXA83 (2)



SERIES 85

JBKA85* ● JBDA85^ ● JBDG85^ ●

H x W x D (mm): 850 x 565 x 375 (external)
H x W x D (mm): 760 x 530 x 300 (internal)
Weight (kg): 13
Break-glass: JBKA85
Plastic toggles: x
'T' handle: JBDA85 & JBDG85
Labels:
Shelves: JBDA85 (1)



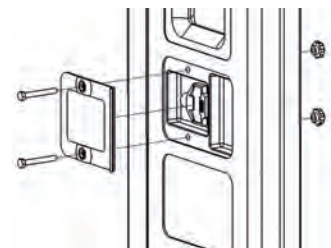
SERIES 90

JBKA90 ● JBKG90 ●

H x W x D (mm): 900 x 930 x 420 (external)
H x W x D (mm): 820 x 850 x 340 (internal)
Weight (kg): 21
Break-glass: ✓
Plastic toggles: x
'T' handle: x
Labels:
Shelves: 1



FACTORY FITTED ALARM



BREAK-GLASS FITMENT



SERIES 65

JBFA65 ●

H x W x D (mm): 650 x 260 x 275
Max Ø (mm): 180
Weight (kg): 3.5
Plastic toggle: ✓
Break-glass: N/A
'T' handle: N/A
Labels:
Shelves: N/A



SERIES 75

JBFA75 ●

H x W x D (mm): 750 x 300 x 300
Max Ø (mm): 230
Weight (kg): 6.5
Plastic toggle: ✓
Break-glass: N/A
'T' handle: N/A
Labels:
Shelves: N/A

MOBILE FIRST AID RESPONSE UNIT

SitePoint is a multi-purpose mobile unit, offering 100 litre capacity storage and display panel of 1060 x 580 mm for information and / or privacy screening • Highly customisable as a first aid response unit with Jonesco and third-party storage products, see our small container (p. 33) & safety (p. 34) ranges • Consumables sold separately • Suitable for indoor / outdoor use • Easy to assemble and disassemble • Large opening for easy access • Angled lid allows water to run off • Easy to clean • Stackable for easy transportation • Compatible with most forklifts • Ergonomic handles for ease of use • Solid rubber wheels (Ø 200 mm)^[1] • Generous mounting space^[2] • Tethering points^[3] • Foot recess to aid tipping and handling^[4] • 3 ground anchor points in the base^[5] • Lockable compartment (padlock not supplied) • Rubber seal and plastic toggle option • Laser logo service available • Backboard natural / white as standard.

When mounting accessories to the backboard use self-tapping screws. For heavier items bolt through the backboard, using suitable fixings and washers. Maximum weight for fixing products / consumables to the backboard: 8 kg each side uniformly distributed. In some circumstances, the **SitePoint** may need to be tethered or anchored to the ground, or weighed down with ballast, such as sand bags or concrete blocks.



HS1-BB1-GR



HS1-BB1-GR & JBKA70



HS1-BB1-GR



HS1-BB1-GR



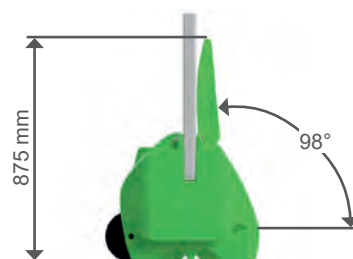
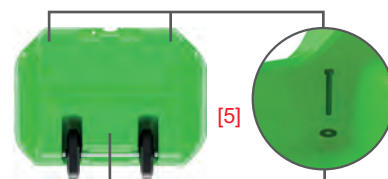
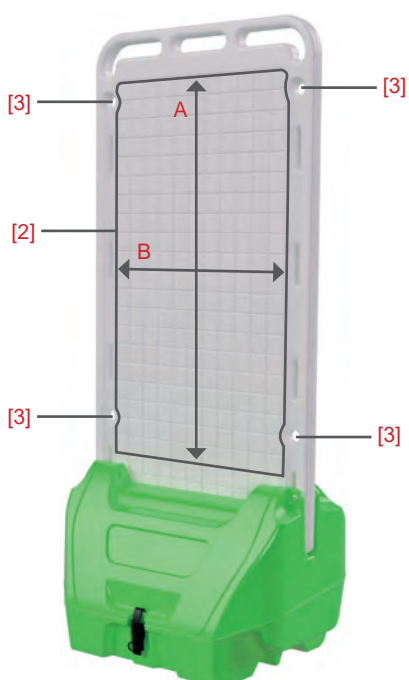
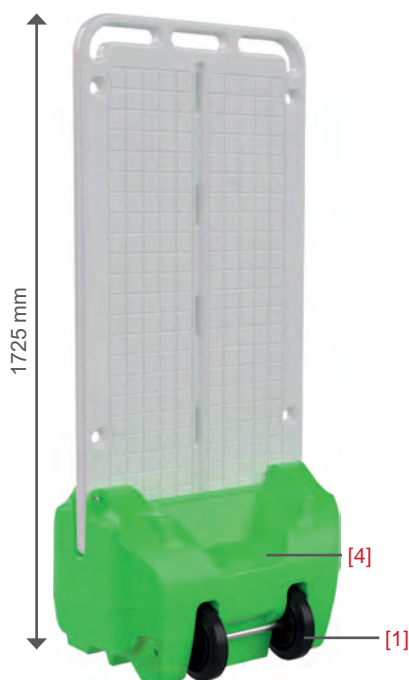
HS1-BB1-GR

H x W x D (mm): 1725 x 755 x 595
 Weight (kg): 26.5
 Capacity (ℓ): 100
 Forklift access: ✓
 A x B (mm): 1060 x 580
 C x D (mm): 265 x 570
 Plastic toggle: ✗



HS1P-BB1-GR

H x W x D (mm): 1725 x 755 x 595
 Weight (kg): 26.5
 Capacity (ℓ): 100
 Forklift access: ✓
 A x B (mm): 1060 x 580
 C x D (mm): 265 x 570
 Plastic toggle: ✓





HOSE REEL HOUSING - HRE100



FIRE PROTECTION

FIRE EXTINGUISHER BOXES	42
MILITARY GRADE BOXES	45
BREAK-GLASS KEY ACCESS BOXES	46
HOSE REEL BOXES	48
MOBILE FIRE RESPONSE UNIT	50
FIRE EXTINGUISHER TROLLEY	52
UTILITY SHELTER	53
FIRE EXTINGUISHER STANDS	54
ACCESSORIES	56
PALLETISATION	69

FIRE EXTINGUISHER BOXES

A range of strong, durable front and top loading boxes for 2-12 kg fire extinguishers, available in a choice of sizes and access options • Access options: plastic toggle(s) OR break-glass facility OR 'T' handle door lock OR rubber fastening toggles • Suitable for indoor / outdoor use • UV blocking moulded-in polycarbonate windows • Truck or wall mountable • Label(s) supplied loose • Automotive grade rubber seal • Left or right hinged mounting • Buckle web strap for securing fire extinguishers • Other colours available upon request - Min. order 10 pieces • For optional extras and accessories see pages 56-59.

SERIES 64, 65 & 75: Internal tension strap helps prevent movement of the cylinder • For extinguishers with a max. diameter of up to 170 mm (SERIES 64), 180 mm (SERIES 65) & 230 mm (SERIES 75) & max. height of 590 mm (SERIES 64), 600 mm (SERIES 65) & 710 mm (SERIES 75).

SERIES 64: Moulded-in fixing points for ease of fitment • Double-skinned lid with waterproof seal • Textured surface finish.

SERIES 73: Suitable for use with cartridge and / or horn extinguisher with a max. diameter of up to 200 mm & max. height of 610 mm.

SERIES 95: Designed primarily for a 5 kg CO₂ extinguisher with a large nozzle.

JFEX01: Strengthened base to accommodate extinguisher • Textured surface finish.

JFEX03: Ideal for use in truck cabs, houses, mobile homes etc.

SERIES	BUCKLE WEB STRAP	WINDOWS	WOODEN BASE PLATE	MOUNTING WALL	TRUCK/ TRAILER	FREE STANDING	DETACHABLE LID
64, 65, 75	✗	✗	✗	✗	✓	✗	✗
68	✓	✗	✗	✓	✓	✗	✓
70, 73, 83	✓	✓	✗	✓	✓	✓	✗
72	✓	✓	✓	✓	✓	✓	✗
85, 90	✗	✓	✓	✓	✗	✓	✗
95	✗	✓	✗	✓	✗	✗	✗
JFEX	✗	✗	✗	✓	✗	✗	✓





SERIES 70

JBWB70 ● JBWE70 ● JBWR70 ●
JBXB70* ● JBWF70^ ● JBXE70* ●

H x W x D (mm): 700 x 320 x 255 (external)
H x W x D (mm): 625 x 260 x 195 (internal)
Box weight (kg): 4
Box type: Front loading
Extinguisher (kg): 6
Plastic toggles: ✓
Labels:



SERIES 72

JBDB72 ● JBDE72 ●

H x W x D (mm): 720 x 585 x 270 (external)
H x W x D (mm): 650 x 530 x 210 (internal)
Box weight (kg): 8
Box type: Front loading
Extinguisher (kg): 12 (2)
Plastic toggles: ✓
Labels:



SERIES 73

JBDB73 ● JBDE73 ● JBDR73 ●

H x W x D (mm): 730 x 435 x 290 (external)
H x W x D (mm): 625 x 350 x 225 (internal)
Box weight (kg): 6.5
Box type: Front loading
Extinguisher (kg): 12
Plastic toggles: ✓
Labels:



SERIES 83

JBXB83 ● JBXE83 ● JBXR83 ●
JBXF83^ ●

H x W x D (mm): 830 x 330 x 265 (external)
H x W x D (mm): 750 x 270 x 220 (internal)
Box weight (kg): 5.5
Box type: Front loading
Extinguisher (kg): 9-12
Plastic toggles: ✓
Labels:



SERIES 85

JBDB85 ● JBDE85 ● JBDR85 ●

H x W x D (mm): 850 x 565 x 375 (external)
H x W x D (mm): 760 x 530 x 300 (internal)
Box weight (kg): 12
Box type: Front loading
Extinguisher (kg): 12
'T' handle: ✓
Labels:

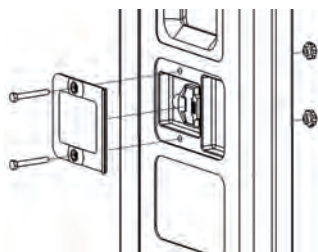


SERIES 90

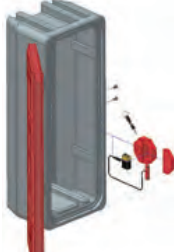
JBKE90 ● JBKR90 ●

H x W x D (mm): 900 x 930 x 420 (external)
H x W x D (mm): 820 x 850 x 340 (internal)
Box weight (kg): 21
Box type: Front loading
Extinguisher (kg): 12 (2)
Break-glass: ✓
Labels:

*Includes internal rubber restraints • ^For wall mounting only, does not include buckle web strap.



BREAK-GLASS FITMENT




FACTORY FITTED ALARM

BREAK-GLASS FITMENT: The key for the cabinet is located behind a clear plate, which is held in place with two plastic fasteners. In an emergency, the clear plate can be broken away, providing access to the key for the cabinet. A new clear plate can be re-attached using the same plastic fasteners.

OPTIONAL FACTORY FITTED ALARM: A reed switch activated 95 dB self-contained 9 V alarm with three minute automatic reset upon activation. Alarm does not interfere with use of equipment. To order, add the letter 'A' after a part number, e.g. JBWE70A.




SERIES 64
JBFB64 ● JBFR64 ●

H x W x D (mm): 640 x 250 x 250
Box weight (kg): 3
Box type: Top loading
Extinguisher (kg): 6
Plastic toggle: ✓
Labels: 




SERIES 65
JBFB65 ● JBFR65 ●

H x W x D (mm): 650 x 260 x 275
Box weight (kg): 3.5
Box type: Top loading
Extinguisher (kg): 6
Plastic toggle: ✓
Labels: 




SERIES 75
JBFB75 ● JBFR75 ●

H x W x D (mm): 750 x 300 x 300
Box weight (kg): 6.5
Box type: Top loading
Extinguisher (kg): 9-12
Plastic toggle: ✓
Labels: 




SERIES 95
JBWB95 ● JBWE95 ● JBWR95 ●

H x W x D (mm): 950 x 445 x 280 (external)
H x W x D (mm): 915 x 360 x 195 (internal)
Box weight (kg): 9
Box type: Front loading
Extinguisher (kg): 5
Plastic toggles: ✓
Labels: 



SERIES 68
JBTB68 ● JBTE68 ●

H x W x D (mm): 680 x 260 x 260 (external)
H x W x D (mm): 585 x 230 x 220 (internal)
Box weight (kg): 3.5
Box type: Front loading
Extinguisher (kg): 6
Plastic toggle: ✓
Labels: 




SERIES JFEX
JFEX01 ●

H x W x D (mm): 640 x 250 x 145 (external)
H x W x D (mm): 560 x 190 x 120 (internal)
Box weight (kg): 2.3
Box type: Front loading
Extinguisher (kg): 6
Rubber toggles: ✓
Labels: N/A



SERIES JFEX
JFEX03 ●

H x W x D (mm): 415 x 210 x 145 (external)
H x W x D (mm): 405 x 185 x 120 (internal)
Box weight (kg): 1
Box type: Top loading
Extinguisher (kg): 2
Snap-fit lid: ✓
Labels: 

MILITARY GRADE BOXES


NATO approved fire extinguisher boxes • Available in NATO green • Independently drop and vibration tested (-35°C) • Strong and durable enough for military use • Label supplied loose • Fixing kits supplied as standard • Automotive grade rubber seal • UV blocking moulded-in polycarbonate window (SERIES 70) • Plastic toggle(s), lynch pin(s) and hinge pin(s) as standard • For optional extras and accessories see pages 56-59.

SERIES 65: Internal tension strap helps prevent movement of the cylinder • For extinguishers with a max. diameter of up to 180 mm & max. height of 600 mm.



JBFM65K (2)



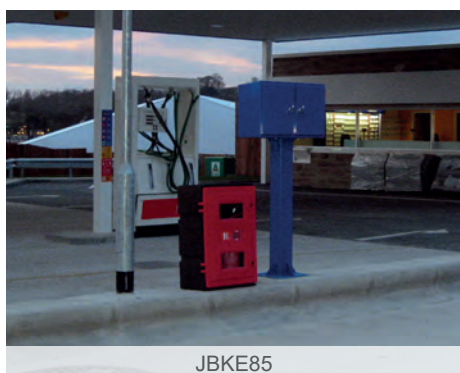
SERIES 65	
JBFM65K ●	
H x W x D (mm):	650 x 260 x 275
Box weight (kg):	3.5
Box type:	Top loading
Fixing kit:	KIT55
NATO #:	6MT1/2540-99-0751-9118
Extinguisher (kg):	6
Plastic toggle:	✓
Labels:	

SERIES 70	
JBWM70KZ ●	
H x W x D (mm):	700 x 320 x 255 (external)
H x W x D (mm):	625 x 260 x 195 (internal)
Box weight (kg):	4
Box type:	Front loading
Fixing kit:	KIT56
NATO #:	6MT1/2540-99-891-7436
Extinguisher (kg):	6
Plastic toggles:	✓
Labels:	

BREAK-GLASS KEY ACCESS BOXES

A range of front loading lockable boxes with key access, key behind protective break-glass for added security • Suitable for indoor / outdoor storage of fire extinguishers, hose reels, breathing apparatus (see pages 56-57 for SCBA bracket), chemicals and spillage equipment • Wall mounted or free-standing • Automotive grade rubber seal • UV blocking moulded-in polycarbonate windows • Left or right hinged mounting • Plastic locks and key compartment with break-glass facility • Wooden base plate (SERIES 90) • Label supplied loose • Other colours available upon request - Min. order 10 pieces • For optional extras and accessories see pages 56-59.

The standard colour scheme for the 'K' Series is a red door with a black body. However, other colour schemes are available and are denoted by the third and fourth digit of the product coding: KB ● & KY ● - Min. order 5 pieces.



JBKE85




JBKE70



JBKE90 & JBKE85




SERIES K70
JBKE70 ● JBKR70 ●

H x W x D (mm): 700 x 300 x 255 (external)
H x W x D (mm): 625 x 260 x 195 (internal)
Box weight (kg): 4
Box type: Front loading
Extinguisher (kg): 6
Break-glass: ✓
Labels: 




SERIES K72
JBKE72 ● JBKR72 ●

H x W x D (mm): 720 x 565 x 270 (external)
H x W x D (mm): 650 x 530 x 210 (internal)
Box weight (kg): 8
Box type: Front loading
Extinguisher (kg): 12 (2)
Break-glass: ✓
Labels: 




SERIES K83
JBKE83 ● JBKR83 ●

H x W x D (mm): 830 x 310 x 265 (external)
H x W x D (mm): 750 x 270 x 220 (internal)
Box weight (kg): 5.5
Box type: Front loading
Extinguisher (kg): 9-12
Break-glass: ✓
Labels: 





SERIES K85
JBKE85 ● JBKR85 ●

H x W x D (mm): 850 x 565 x 375 (external)
H x W x D (mm): 760 x 530 x 300 (internal)
Box weight (kg): 12
Box type: Front loading
Extinguisher (kg): 12
Break-glass: ✓
Labels: 




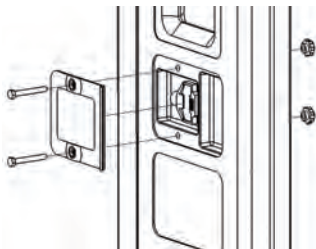
SERIES K90
JBKE90 ● JBKR90 ●

H x W x D (mm): 900 x 930 x 420 (external)
H x W x D (mm): 820 x 850 x 340 (internal)
Box weight (kg): 21
Box type: Front loading
Extinguisher (kg): 12 (2)
Break-glass: ✓
Labels:  



SERIES K95
JBKE95 ● JBKR95 ●

H x W x D (mm): 950 x 425 x 280 (external)
H x W x D (mm): 915 x 360 x 195 (internal)
Box weight (kg): 9
Box type: Front loading
Extinguisher (kg): 5
Break-glass: ✓
Labels: 



BREAK-GLASS FITMENT



FACTORY FITTED ALARM

BREAK-GLASS FITMENT: The key for the cabinet is located behind a clear plate, which is held in place with two plastic fasteners. In an emergency, the clear plate can be broken away, providing access to the key for the cabinet. A new clear plate can be re-attached using the same plastic fasteners.

OPTIONAL FACTORY FITTED ALARM: A reed switch activated 95 dB self-contained 9 V alarm with three minute automatic reset upon activation. Alarm does not interfere with use of equipment. To order, add the letter 'A' after a part number, e.g. JBKE70A.

HOSE REEL BOXES

A range of front loading boxes suitable for storage of various hose reel sizes • Fully encased or open back body • Suitable for indoor / outdoor use • Automotive grade rubber seal • Left or right hinged mounting • Other colours available upon request - Min. order 10 pieces • For optional extras and accessories see pages 56-59.

SERIES 56: Ideal for marine layflat hose • Woven strap to secure contents • Hose reel label supplied loose.

SERIES 85: 'T' handle door lock • UV blocking moulded-in polycarbonate windows • Wooden base plate • Hose reel label not supplied.

SERIES 90: Wall mounted or free standing • UV blocking moulded-in polycarbonate windows • Plastic locks and key compartment with break-glass facility • Wooden base plate • Hose reel label supplied loose.

SERIES 100: Ideal for harsh environments, e.g. abattoirs, chemical factories, marine environment, etc. • 'L' shaped door to allow hose reel to pivot through 140° • Plastic locks and key compartment with break-glass facility • Robust nylon hinges • Padlock / tamper strap facility (Padlock / strap not supplied) • Water inlet pipe aperture cut at installation for ideal fit • Lightweight - almost half the weight of steel versions - and easier to install • Hose reel label supplied loose.



HRE100



HRE100



HRE100



HRE100



SERIES 56
HRE56 ● HRR56 ●

H x W x D (mm): 610 x 500 x 190 (external)
H x W x D (mm): 500 x 395 x 140 (internal)
Box weight (kg): 5
Box type: Front loading
Fully encased: ✓
Open back: ✗
Labels:



SERIES 85
JBDE85 ● JBDR85 ●

H x W x D (mm): 850 x 565 x 375 (external)
H x W x D (mm): 760 x 530 x 300 (internal)
Box weight (kg): 12
Box type: Front loading
Fully encased: ✓
Open back: ✗
Labels:



SERIES 90
JBKE90 ● JBKR90 ●

H x W x D (mm): 900 x 930 x 420 (external)
H x W x D (mm): 820 x 850 x 340 (internal)
Box weight (kg): 21
Box type: Front loading
Fully encased: ✓
Open back: ✗
Labels:



SERIES 100
HRE100 ●

H x W x D (mm): 1000 x 1000 x 480 (external)
H x W x D (mm): 800 x 820 x 435 (internal)
Box weight (kg): 21.5
Box type: Front loading
Fully encased: ✗
Open back: ✓
Labels:



JBDE85



JBKE90



HRR56

MOBILE FIRE RESPONSE UNIT

SitePoint is a multi-purpose mobile unit, offering 100 litre capacity storage and display panel of 1060 x 580 mm • Highly customisable as a fire point response unit with Jonesco and third-party storage products, see our small container (p. 33) & fire (p. 40) ranges • Consumables sold separately • Suitable for indoor / outdoor use • Easy to assemble and disassemble • Large opening for easy access • Angled lid allows water to run off • Easy to clean • Stackable for easy transportation • Compatible with most forklifts • Ergonomic handles for ease of use • Solid rubber wheels (Ø 200 mm)^[1] • Generous mounting space^[2] • Tethering points^[3] • Foot recess to aid tipping and handling^[4] • 3 ground anchor points in the base^[5] • Lockable compartment (padlock not supplied) • Rubber seal and plastic toggle option • Laser logo service available • Backboard natural / white as standard.

When mounting accessories to the backboard use self-tapping screws. For heavier items bolt through the backboard, using suitable fixings and washers. Maximum weight for fixing products / consumables to the backboard: 8 kg each side uniformly distributed. In some circumstances, the **SitePoint** may need to be tethered or anchored to the ground, or weighed down with ballast, such as sand bags or concrete blocks.



HS1-BB1-RE



HS1NL-BB1-RE, JFEX03 & 1005-CORE



HS1-BB1-RE



HS1P-BB1-RE, JFEX03 & 1005-CORE



HS1-BB1-RE

H x W x D (mm): 1725 x 755 x 595
 Weight (kg): 26.5
 Capacity (ℓ): 100
 Forklift access: ✓
 A x B (mm): 1060 x 580
 C x D (mm): 265 x 570
 Plastic toggle: ✗



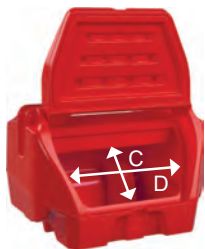
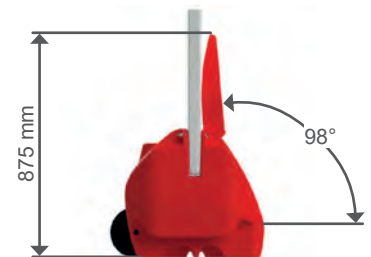
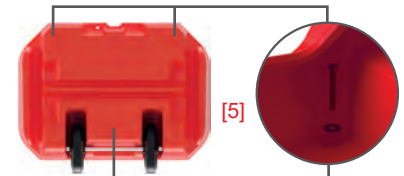
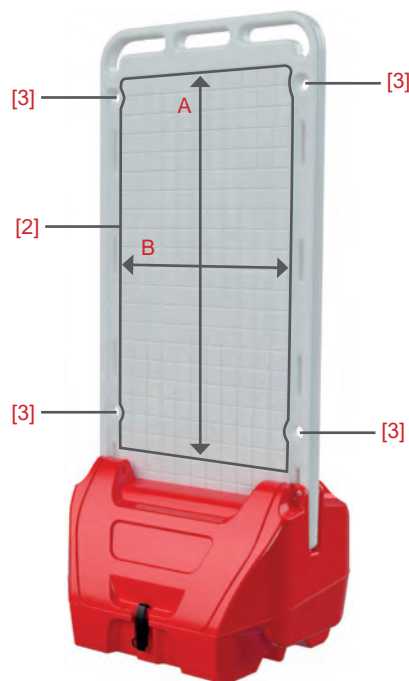
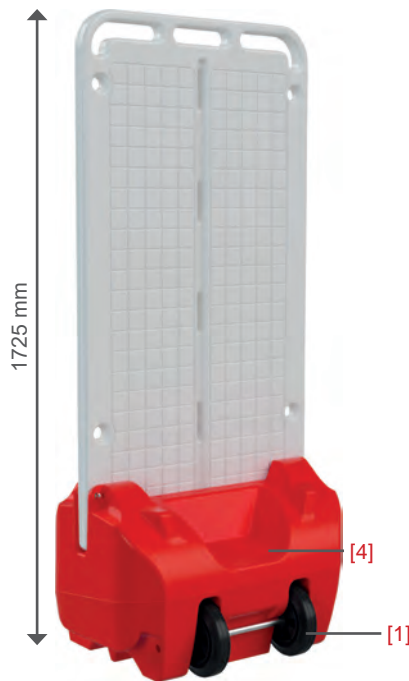
HS1P-BB1-RE

H x W x D (mm): 1725 x 755 x 595
 Weight (kg): 26.5
 Capacity (ℓ): 100
 Forklift access: ✓
 A x B (mm): 1060 x 580
 C x D (mm): 265 x 570
 Plastic toggle: ✓



HS1NL-BB1-RE

H x W x D (mm): 1725 x 755 x 595
 Weight (kg): 26.5
 Capacity (ℓ): 100
 Forklift access: ✓
 A x B (mm): 1060 x 580
 C x D (mm): 265 x 570
 Plastic toggle: N/A



FIRE EXTINGUISHER TROLLEY

FireKart: An elegant, innovative mobile fire point for 2 extinguishers (including CO₂) • max. combined weight of extinguishers: 30 kg • Ideal for petrol forecourts, garages, construction sites, indoor / outdoor events, harbours, campsites, etc. • Allows for highly visible alarm fitment of various shapes & sizes to the front of the unit^[1] • Signage / label area at the top^[1] • Extinguisher cradles for stable transport^[2] • Fixing slots to accommodate multiple extinguishers and bracket types, hooks supplied (KIT109)^[3] • Base with drainage slot, designed for various fire bucket sizes & shapes^[4] • Solid rubber wheels (Ø 200 mm) • Optimized centre of gravity - easy to move, pull or push • Rear design allows unit to slide up / down a step smoothly • For extinguishers with a max. diameter of 200 mm.



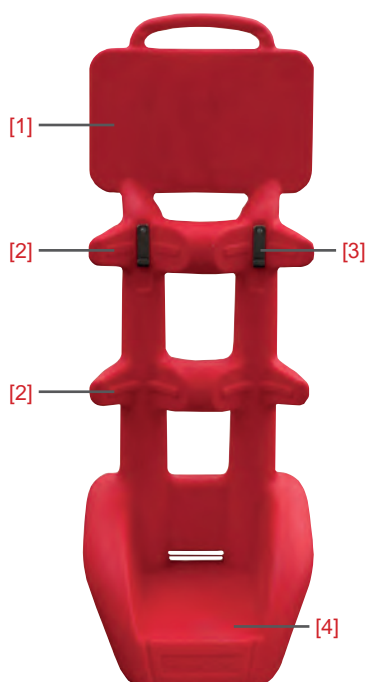
WEX01-CORE



WEX01-CORE



WEX01-CORE



WEX01-CORE ●

H x W x D (mm): 1300 x 500 x 465
Weight (kg): 11

UTILITY SHELTER

Large shelter for wheeled fire extinguishers and other utility equipment • Highly visible • Ideal for airports, factories, leisure sites, refineries etc. • Suitable for indoor / outdoor use • Use the pre-drilled fixing points to secure the unit where appropriate (fixings not supplied) • Light & easy to maintain • Designated label area, label supplied loose • Other colours available upon request - Min. order 20 pieces.

JES146-SC1: Soft cover door for self-fitment • Made from polyester 1100 Dtex (1000) Denier.



JES146-CORE



JES146-CORE



JES146-CORE ●



JES146-SC1 ●



JES146-CORE

H x W x D (mm): 1460 x 1060 x 1595
Weight (kg): 32.5
Labels: 

H x W (mm): 1460 x 1060

FIRE EXTINGUISHER STANDS

A range of single, double and triple fire extinguisher stands • These fire stands keep extinguishers off the floor, offer a clear visual marker in emergency, and deter theft or movement of extinguishers to an unapproved position • Suitable for all portable extinguishers • Ideal for public buildings, offices, hotels, exhibitions, etc. • Non-slip design • Immediate access in case of emergency • Strong and durable • Modern ergonomic design • Labels not included • For optional extras and accessories see pages 56-59.

- JFP6:** Triple stand • Combination of JFP3 & JFP4 • Supplied in one box for self-assembly • Assembly kit included.
- JFP7:** Suitable for 1 x 6-9 kg extinguisher and 1 x 2 kg CO₂ extinguisher.
- JFP9 & JFP10:** Suitable for all flat-bottomed 6-12 kg extinguishers and 2 kg CO₂ extinguishers • Cost saving flat pack design • Easy snap-fit assembly • Adjustable strap available for CO₂ extinguishers (KIT108).
- JFPINSERT:** Fire stand insert for smaller diameter extinguishers • Suitable for use with JFP1, JFP2, JFP7 & JFP8 • Ideal for extinguisher with a diameter less than 165 mm.



JFPINSERT ● JFPINSERT-MG10 ●

Height (mm):	105
Diameter (mm):	225
Weight (kg):	0.5
Max diameter (mm):	165
Labels:	N/A
Fire extinguisher:	1



JFP1 ● JFP1-MG10 ●

H x W x D (mm): 200 x 345 x 345
Weight (kg): 1.7
Max diameter (mm): 225
Labels: x
Fire extinguisher: 1



JFP2 ● JFP2-MG10 ●

H x W x D (mm): 150 x 645 x 320
Weight (kg): 3.3
Max diameter (mm): 225
Labels: x
Fire extinguisher: 2



JFP3 ● JFP3-MG10 ●

H x W x D (mm): 750 x 320 x 300
Weight (kg): 2.6
Max diameter (mm): 240
Labels: x
Fire extinguisher: 1



JFP4 ● JFP4-MG10 ●

H x W x D (mm): 750 x 620 x 300
Weight (kg): 5.2
Max diameter (mm): 240
Labels: x
Fire extinguisher: 2



JFP6 ● JFP6-MG10 ●

H x W x D (mm): 750 x 940 x 300
Weight (kg): 7
Max diameter (mm): 240
Labels: x
Fire extinguisher: 3



JFP7 ● JFP7-MG10 ●

H x W x D (mm): 620 x 480 x 270
Weight (kg): 3.6
Max diameter (mm): 195 / 125
Labels: x
Fire extinguisher: 2



JFP8 ● JFP8-MG10 ●

H x W x D (mm): 620 x 310 x 265
Weight (kg): 2.5
Max diameter (mm): 195
Labels: x
Fire extinguisher: 1



JFP9 ● JFP9-MG10 ●

H x W x D (mm): 645 x 290 x 300
Weight (kg): 1.8
Max diameter (mm): 195
Flat-packed: ✓
Labels: x
Fire extinguisher: 1



JFP10 ● JFP10-MG10 ●

H x W x D (mm): 645 x 500 x 300
Weight (kg): 3
Max diameter (mm): 195
Flat-packed: ✓
Labels: x
Fire extinguisher: 2

ACCESSORIES

SHOVELS: Made from recyclable, chemical resistant polypropylene (PP) • Ideal for grit, sand & salt • Lightweight • Easy to clean • Non-stick.

J-ADR-SF03 & WIN-A607: Tough and durable • Anti-spark • Static resistant • Proven use in many climates from -35°C to +50°C.

J-PELLE/BR/CLIP: Shovel with clip for mounting to storage boxes and **SitePoint** backboard (Recommended fixing for clip: DIN 7981 3.5 x 16 stainless steel self-tapping screws, not supplied).

KIT103: Castor kit for JBS400, JBS400R, JBS500 & JBS500B storage boxes • Features rotation and swivel brake (2) for self-fitment.

KIT104: Padlock kit for JBS110, JBS200 & JBS400R • Screws included • Padlock not supplied.

SCBA1: Ready assembled universal bracket for self-contained breathing apparatus (SCBA) • Accommodates all single cylinder SCBA including carbon fibre models • 1075 carbon spring steel cradles with scratch resistant Nylon & plastic coating to hold / protect the cylinder • Suitable for SERIES 85 (max. 1 SCBA) & SERIES 90 (max. 2 SCBA) For our health & safety & fire protection ranges, see pages 36-37 and 46-47 • Fixings supplied.

JHSA1: Battery operated (9 V) electronic alarm with integral strobe for noisy environments • Sounds at 100 dB for up to 1000 m • on / off switch with indicator light • Fixings not included.

JRHB: Hand operated aluminium rotary alarm bell • Sounds at 60 dB for up to 35 m • Fixings not included.

KITALARM: A reed switch activated 95 dB self-contained 9 V alarm with three minute automatic reset upon activation. Alarm does not interfere with use of equipment.



J-ADR-SF03 ●
Two-part shovel.



J-PELLE/BR ●
Telescopic shovel.



J-PELLE/BR/CLIP ●
Telescopic shovel with clip.

H x W x D (mm): 965 x 245 x 315
Weight (kg): 1.1
Clip: N/A

H x W x D (mm): 480/715 x 205 x 100
Weight (kg): 0.35
Clip: x

H x W x D (mm): 480/715 x 205 x 100
Weight (kg): 0.35
Clip: ✓



WIN-A607 ●

Scoop shovel.

H x W x D (mm): 355 x 170 x 230
Weight (kg): 0.3
Clip: N/A



KIT103

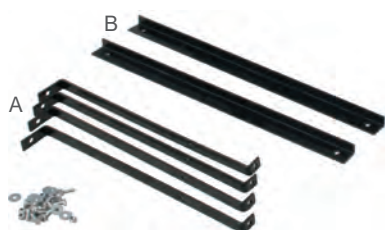
Castor kit for storage boxes.

Height (mm): 100
Weight (kg): 1.3



KIT104

Padlock kit for JBS110, JBS200 & JBS400R •
 Screws included • Padlock not supplied.



KIT35

Fixing kit for lockable storage box JBZ700.

H x W x D (mm): 100 x 520 x 25 (A)
H x W x D (mm): 40 x 685 x 25 (B)



KIT36

Fixing kit for lockable storage box JBZ900.

H x W x D (mm): 100 x 520 x 25 (A)
H x W x D (mm): 40 x 880 x 25 (B)



SCBA1

SCBA bracket for SERIES 85 & SERIES 90.

H x W x D (mm): 560 x 220 x 150
Weight (kg): 2



KIT55

For mounting SERIES 65 / 75 boxes to a vehicle at an angle of 30° or 60°.



KIT56

Vertical / horizontal kit for mounting SERIES 65 / 75 boxes to a vehicle • Also suitable for some front loading boxes.



KIT65

For mounting SERIES 64 to a vehicle at an angle of 30° or 60°.



KIT80

For mounting SERIES 70 / 83 boxes to a landing leg • Suitable for 110 / 135 mm wide landing legs.



KIT-LAB-FIRSTAID



KIT-LAB-ADR



KIT-LAB-FIRE



KIT-LAB-SPILLKIT



KIT-LAB-BA



KIT-LAB-HOSEREEL



KIT-LAB-FOAM-CO2

LABELS

10 labels per kit.

LABELS

1 x CO₂ & 1 x Foam.



JPFB1 ●

Plastic fire bucket without lid.

H x W x D (mm): 270 x 275 x 220
Weight (kg): 0.675
Capacity (ℓ): 10



JPBL1 ●

Plastic lid for JPFB1.

H x W x D (mm): 45 x 285 x 270
Weight (kg): 0.125



JHSA1 ●

Electric alarm.

H x W x D (mm): 260 x 160 x 70
Weight (kg): 0.70



JRHB ●

Rotary alarm bell.

H x W x D (mm): 250 x 245 x 135
Weight (kg): 1.7



KITALARM



KIT50

Rubber strap.



KIT51

Buckle web strap.



KIT108

Adjustable strap for CO₂ extinguishers, suitable for JFP9 & JFP10 fire extinguisher stands.



KIT52

Free standing feet for Jonesco front loading health & safety and fire protection boxes.



KIT81

Spare break-glass kit for Jonesco front loading health & safety and fire protection boxes • 2 keys, 2 clear plates, 2 fasteners & 1 fire label.



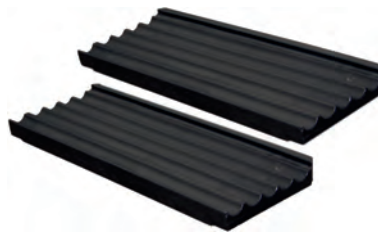
KIT81A

Spare break-glass kit for Jonesco SERIES 90 health & safety and fire protection boxes • 2 keys, 2 clear plates, 2 fasteners, 1 fire label & 1 hose reel label.



KIT91

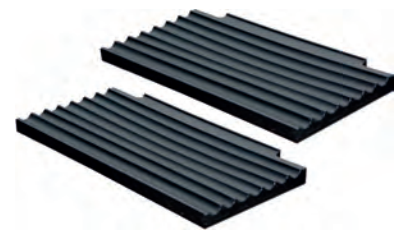
Spare break-glass key for Jonesco front loading health & safety and fire protection boxes • 10 pieces.



KITSHELF72

2 plastic shelves for SERIES 72.

H x W x D (mm): 40 x 535 x 195
Weight (kg): 1 (2)



KITSHELF85

2 plastic shelves for SERIES 85.

H x W x D (mm): 40 x 535 x 250
Weight (kg): 1.2 (2)



KIT-TOGGLE

Spare plastic toggle kit Jonesco health & safety and fire protection boxes • 2 plastic toggles, 4 hinge pins, 2 lynch pins.



KIT57

2 wooden shelves for SERIES 85.

H x W x D (mm): 10 x 520 x 260
Weight (kg): 0.8 (2)



KIT90

2 wooden shelves for SERIES 90.

H x W x D (mm): 10 x 880 x 325
Weight (kg): 1.5 (2)

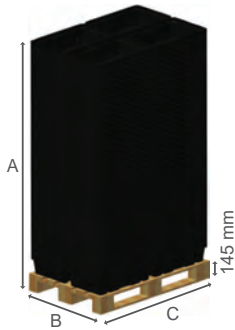




PALLETISATION

SPILL CONTAINMENT	62
STORAGE BOXES	66
HEALTH & SAFETY	68
FIRE PROTECTION	69

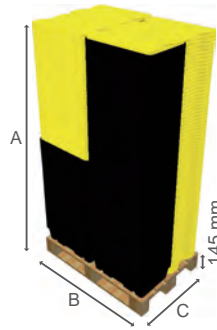
SPILL CONTAINMENT



ST1-20-B-BK

A x B x C - 2080 x 800 x 1200 mm

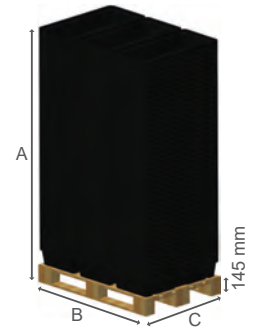
- 140 pieces
- 20' - 1540 pieces
- 40' - 3500 pieces
- 13.6 m - 4620 pieces



ST1-20-XX-BK

A x B x C - 2060 x 1200 x 800 mm

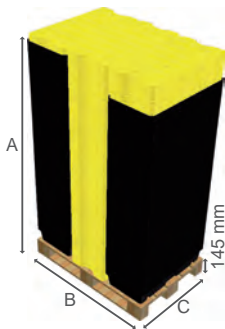
- 112 pieces
- 20' - 1232 pieces
- 40' - 2800 pieces
- 13.6 m - 3696 pieces



ST1-30-B-BK

A x B x C - 2080 x 1210 x 805 mm

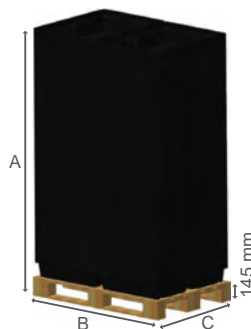
- 105 pieces
- 20' - 1155 pieces
- 40' - 2625 pieces
- 13.6 m - 3465 pieces



ST1-30-XX-BK

A x B x C - 2050 x 1200 x 800 mm

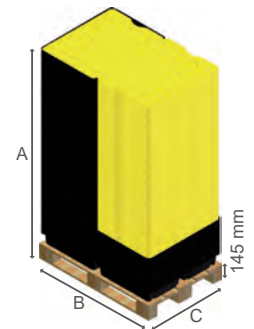
- 84 pieces
- 20' - 924 pieces
- 40' - 2100 pieces
- 13.6 m - 2772 pieces



ST1-40-B-BK

A x B x C - 1995 x 1200 x 800 mm

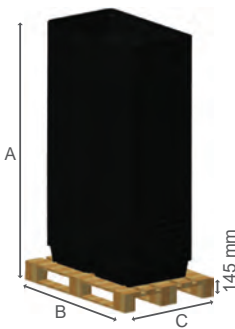
- 68 pieces
- 20' - 748 pieces
- 40' - 1700 pieces
- 13.6 m - 2244 pieces



ST1-40-XX-BK

A x B x C - 2015 x 1200 x 800 mm

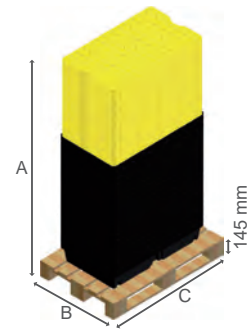
- 37 pieces
- 20' - 407 pieces
- 40' - 925 pieces
- 13.6 m - 1221 pieces



ST1-60-B-BK

A x B x C - 1960 x 1300 x 1100 mm

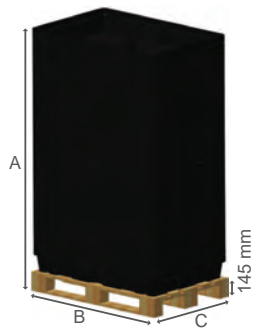
- 68 pieces
- 20' - 544 pieces
- 40' - 1224 pieces
- 13.6 m - 1480 pieces



ST1-60-XX-BK

A x B x C - 1975 x 800 x 1200 mm

- 18 pieces
- 20' - 198 pieces
- 40' - 450 pieces
- 13.6 m - 594 pieces



ST1-100-B-BK

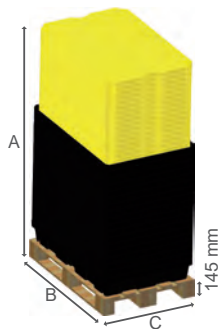
A x B x C - 1960 x 1200 x 800 mm

- 30 pieces
- 20' - 330 pieces
- 40' - 750 pieces
- 13.6 m - 990 pieces

: Pallet • 20': Container • 40': High cube container • 13.6 m: Trailer.

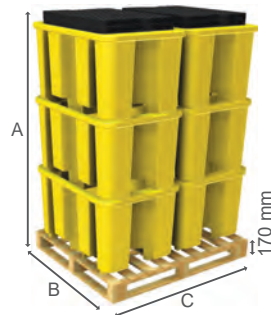
The information is to our best knowledge true and accurate but all recommendations or suggestions are made without guarantee.

www.jonesco-plastics.com



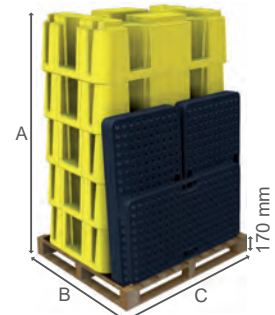
ST1-100-XX-BK

A x B x C - 1980 x 1200 x 800 mm
 - 18 pieces
 20' - 198 pieces
 40' - 450 pieces
 13.6 m - 594 pieces



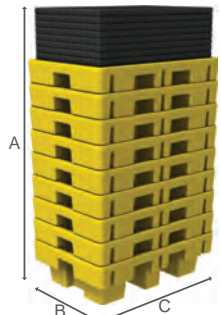
SJ-100-050 / 051

A x B x C - 1950 x 1100 x 1300 mm
 - 6 pieces
 20' - 48 pieces
 40' - 96 pieces
 13.6 m - 132 pieces



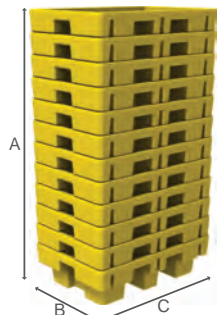
SJ-100-001 / 002

A x B x C - 1955 x 1100 x 1300 mm
 - 5 pieces
 20' - 40 pieces
 40' - 90 pieces
 13.6 m - 110 pieces



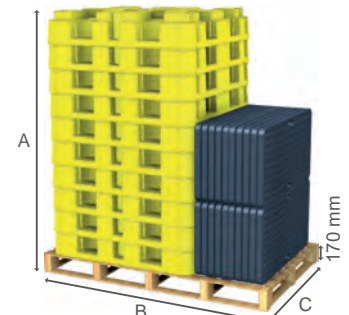
SJ-2E-COYE / BLK + SJ-2E-PLAT

A x B x C - 2305 x 910 x 1310 mm
 - 9 pieces
 20' - 90 pieces
 40' - 198 pieces
 13.6 m - 216 pieces



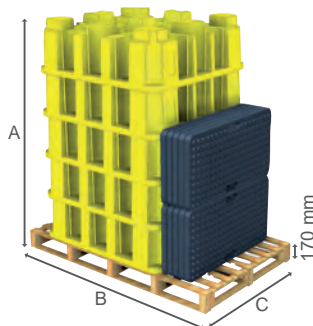
SJ-2E-COYE / BLK

A x B x C - 2470 x 910 x 1310 mm
 - 12 pieces
 20' - 120 pieces
 40' - 264 pieces
 13.6 m - 288 pieces



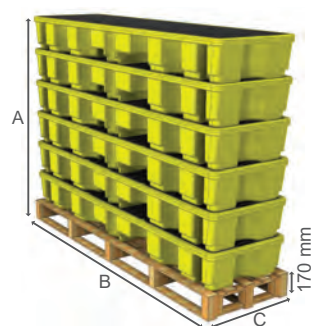
SJ-100-006 / 007

A x B x C - 2295 x 2100 x 1300 mm
 - 10 pieces
 20' - 40 pieces
 40' - 180 pieces
 13.6 m - 200 pieces



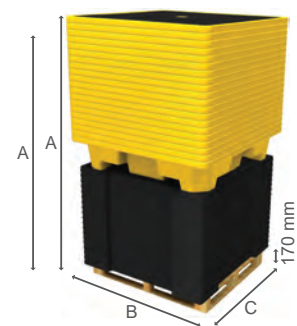
SJ-100-010 / 011

A x B x C - 2210 x 2100 x 1300 mm
 - 5 pieces
 20' - 20 pieces
 40' - 45 pieces
 13.6 m - 50 pieces



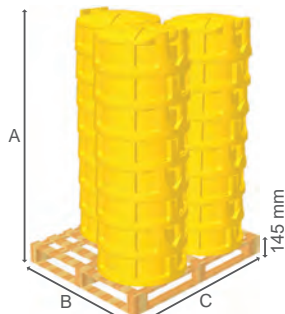
SJ-100-060 / 061

A x B x C - 1790 x 2460 x 700 mm
 - 6 pieces
 20' - 42 pieces
 40' - 84 pieces
 13.6 m - 133 pieces



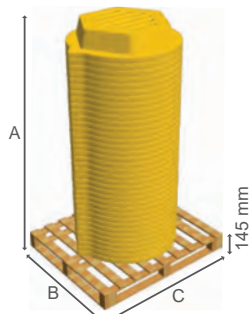
SJ-110-006 / 007

A x B x C - 2270/2485 x 1460 x 1460 mm
 - 18/20 pieces
 20' - 72 pieces
 40' - 160 pieces
 13.6 m - 180 pieces



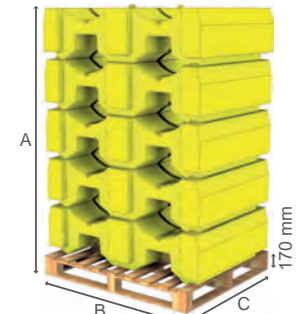
SJ-600-001 / SJ-600-001/P

A x B x C - 1795 x 1100 x 1300 mm
 - 24 pieces
 20' - 192 pieces
 40' - 432 pieces
 13.6 m - 528 pieces



SJ-610-001 / 002

A x B x C - 2085 x 1100 x 1300 mm
 - 36 pieces
 20' - 288 pieces
 40' - 648 pieces
 13.6 m - 792 pieces

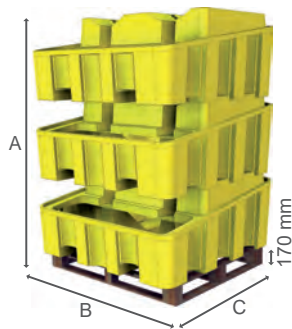


SJ-200-001 / 002

A x B x C - 2040 x 1375 x 1100 mm
 - 5 pieces
 20' - 40 pieces
 40' - 80 pieces
 13.6 m - 90 pieces

☞: Pallet • 20': Container • 40': High cube container • 13.6 m: Trailer.

The information is to our best knowledge true and accurate but all recommendations or suggestions are made without guarantee.



SJ-200-003 / 004

A x B x C - 2040 x 1375 x 1350 mm

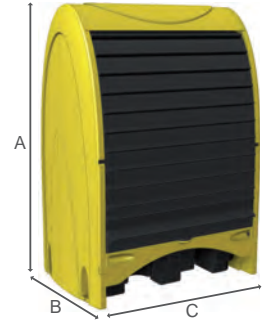
- 3 pieces
 20' - 12 pieces
 40' - 24 pieces
 13.6 m - 30 pieces



SJ-400-001 / 003

A x B x C - 1885 x 1360 x 815 mm

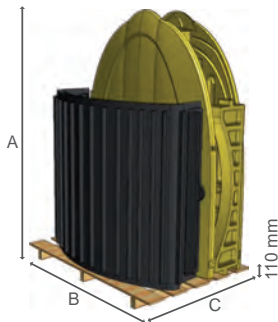
- 2 pieces
 20' - 22 pieces
 40' - 44 pieces
 13.6 m - 60 pieces



SJC2-YE-BK-B-A

A x B x C - 2110 x 1100 x 1650 mm

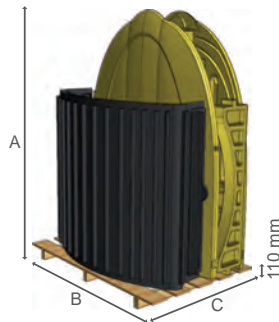
20' - 6 pieces
 40' - 14 pieces
 13.6 m - 16 pieces



SJC4-YE-BK-B-F

A x B x C - 2210 x 1600 x 800 mm

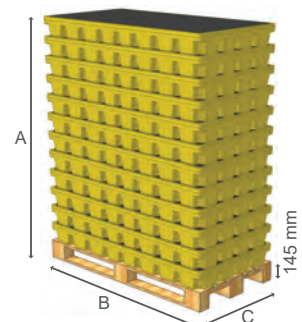
20' - 6 pieces
 40' - 14 pieces
 13.6 m - 24 pieces



SJC45-YE-BK-B-F

A x B x C - 2210 x 1650 x 1100 mm

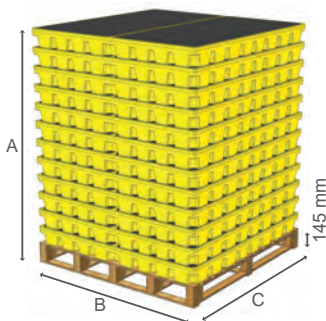
20' - 6 pieces
 40' - 14 pieces
 13.6 m - 16 pieces



SJ-300-001 / 002

A x B x C - 1970 x 1600 x 800 mm

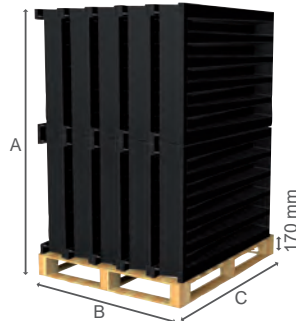
- 12 pieces
 20' - 84 pieces
 40' - 180 pieces
 13.6 m - 288 pieces



SJ-300-006 / 007

A x B x C - 1970 x 1600 x 1600

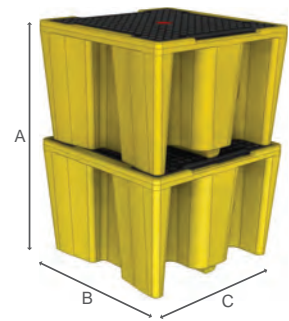
- 12 pieces
 20' - 36 pieces
 40' - 84 pieces
 13.6 m - 96 pieces



SJ-300-010

A x B x C - 1770 x 1100 x 1300 mm

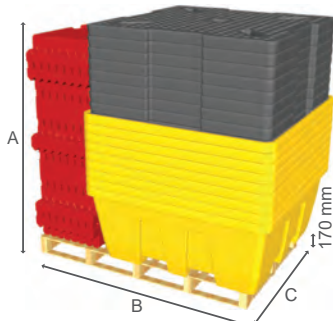
- 20 pieces
 20' - 160 pieces
 40' - 360 pieces
 13.6 m - 440 pieces



SJ-500-001 / 002 / 005 / 006

A x B x C - 2000 x 1450 x 1450 mm

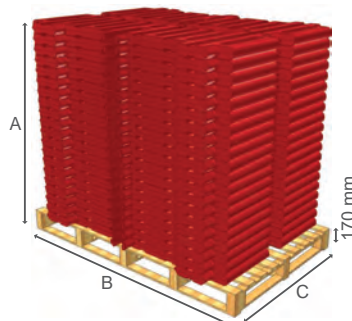
- 2 pieces
 20' - 8 pieces
 40' - 16 pieces
 13.6 m - 18 / 27* pieces



SJ-510-001 / 002

A x B x C - 2370 x 2200 x 1670 mm

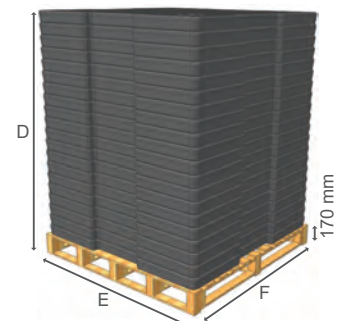
- 9 pieces
 20' - 21 pieces
 40' - 63 pieces
 13.6 m - 72 pieces



SJ-510-095

A x B x C - 1770 x 2100 x 1295 mm

- 20 pieces
 20' - 40 pieces
 40' - 80 pieces
 13.6 m - 80 pieces

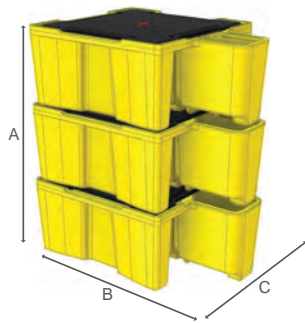


D x E x F - 2010 x 1600 x 1600 mm

: Pallet • 20': Container • 40': High cube container • 13.6 m: Trailer. *Curtainsider.

The information is to our best knowledge true and accurate but all recommendations or suggestions are made without guarantee.

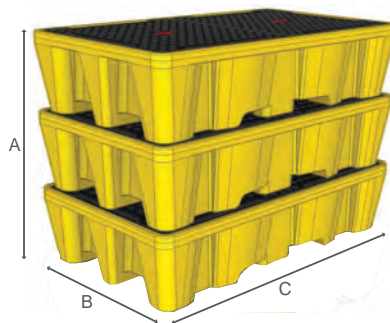
www.jonesco-plastics.com



SJ-525-BK-YE / BK & SJ-525-B-BK / YE

A x B x C - 2250 x 2000 x 1490 mm

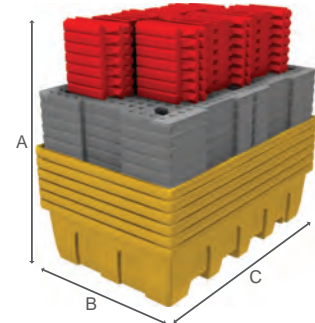
Pallet - 3 pieces
 20' - 9 pieces
 40' - 24 pieces
 13.6 m - 27 pieces



SJ-500-003 / 004

A x B x C - 1725 x 1450 x 2450 mm

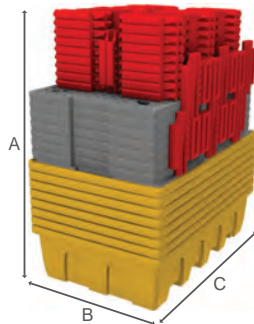
Pallet - 3 pieces
 20' - 8 pieces
 40' - 32 pieces
 13.6 m - 36 pieces



SJ-520-001 / 002

A x B x C - 2075 x 1460 x 2260 mm

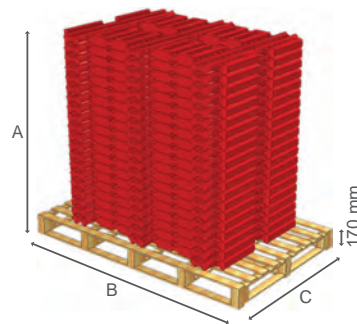
Pallet - 6 pieces
 20' - 24 pieces



SJ-520-001 / 002

A x B x C - 2500 x 1460 x 2260 mm

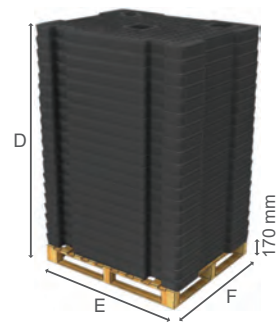
Pallet - 8 pieces
 40' - 64 pieces
 13.6 m - 72 pieces



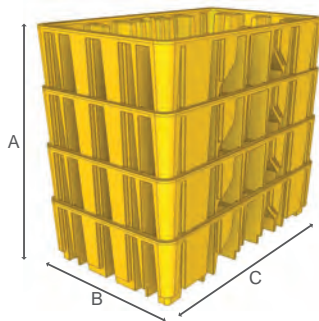
SJ-520-095

A x B x C - 1930 x 2100 x 1295 mm

Pallet - 10 pieces
 40' - 60 pieces



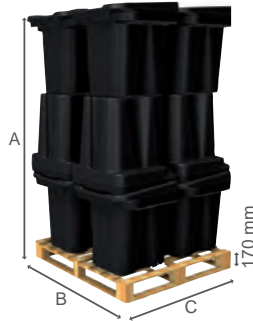
D x E x F - 1985 x 1365 x 1080 mm



SJ-545-YE / BLK

A x B x C - 2205 x 1360 x 2030 mm

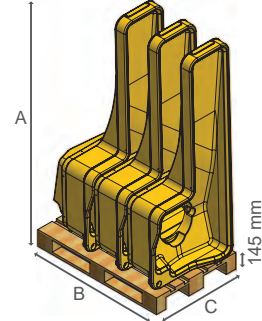
Pallet - 4 pieces
 20' - 16 pieces
 40' - 32 pieces
 13.6 m - 36 / 40* pieces



SJ-500-007 / 008 & SJ-510-003

A x B x C - 2165 x 1300 x 1180 mm

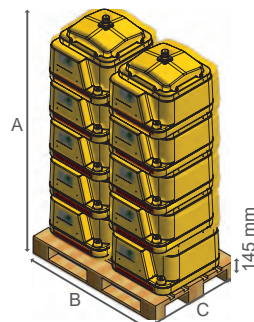
Pallet - 12 pieces
 20' - 96 pieces
 40' - 216 pieces
 13.6 m - 240 pieces



CCRT-TS-YE

A x B x C - 2000 x 1200 x 800 mm

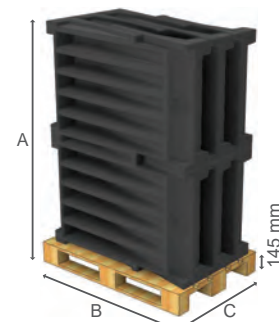
Pallet - 3 pieces
 20' - 33 pieces
 40' - 75 pieces
 13.6 m - 99 pieces



CCRT2-TE-YE / BK

A x B x C - 1985 x 1200 x 800 mm

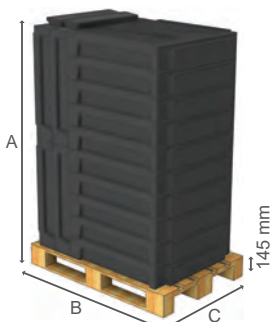
Pallet - 10 pieces
 20' - 110 pieces
 40' - 250 pieces
 13.6 m - 330 pieces



JR1

A x B x C - 1645 x 1200 x 800 mm

Pallet - 12 pieces
 20' - 132 pieces
 40' - 300 pieces
 13.6 m - 396 pieces



JRB1

A x B x C - 1690 x 1200 x 800 mm

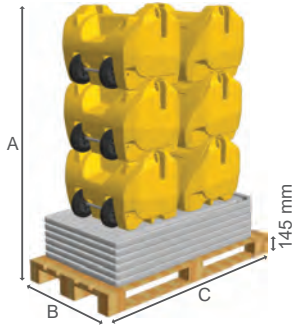
Pallet - 14 pieces
 20' - 154 pieces
 40' - 350 pieces
 13.6 m - 462 pieces

Pallet • 20': Container • 40': High cube container • 13.6 m: Trailer. *Curtainsider.

The information is to our best knowledge true and accurate but all recommendations or suggestions are made without guarantee.

www.jonesco-plastics.com

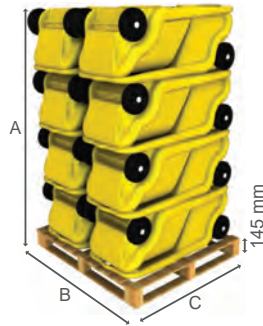
STORAGE BOXES



SitePoint

A x B x C - 1850 x 800 x 1600 mm

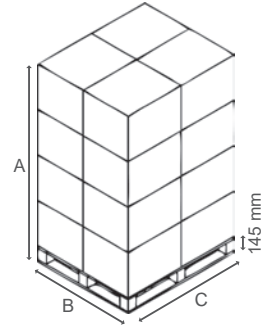
-  - 6 pieces
- 20' - 36 pieces
- 40' - 84 pieces
- 13.6 m - 144 pieces



UniKart


A x B x C - 1955 x 1300 x 1100 mm

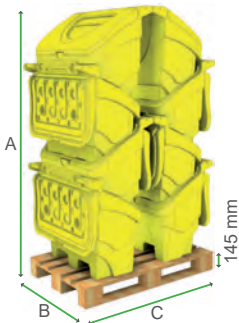
-  - 16 pieces
- 20' - 128 pieces
- 40' - 288 pieces
- 13.6 m - 352 pieces



JBS110

A x B x C - 2460 x 1300 x 1100 mm

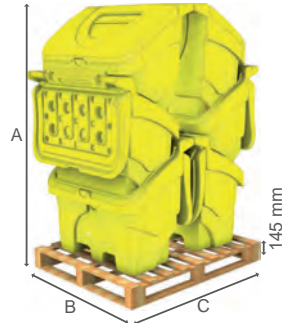
-  - 16 pieces
- 40' - 288 pieces
- 13.6 m - 352 pieces



JBS130


A x B x C - 2035 x 850 x 1200 mm

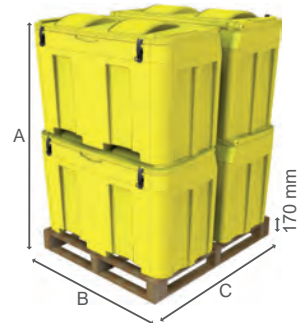
-  - 8 pieces
- 20' - 80 pieces
- 40' - 192 pieces
- 13.6 m - 216 pieces



JBS200


A x B x C - 2440 x 1100 x 1365 mm

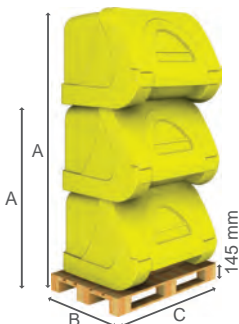
-  - 6 pieces
- 40' - 102 pieces
- 13.6 m - 108 pieces



JBS400


A x B x C - 1750 x 1200 x 1300 mm

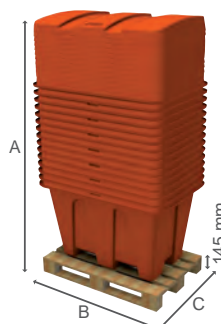
-  - 4 pieces
- 20' - 32 pieces
- 40' - 72 pieces
- 13.6 m - 80 pieces



JBS400R

A x B x C - 1450/2300 x 885 x 1200 mm

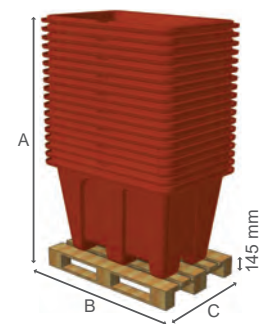
-  - 2/3 pieces
- 20' - 33 pieces
- 40' - 75 pieces
- 13.6 m - 84 pieces



JBS500


A x B x C - 2365 x 1265 x 855 mm

-  - 15 pieces
- 20' - 165 pieces
- 40' - 275 pieces
- 13.6 m - 420 pieces



JBS500B

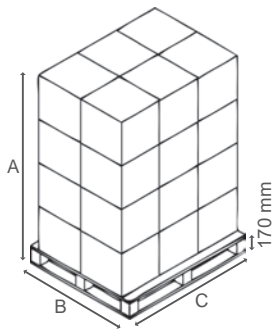
A x B x C - 1955 x 1200 x 800 mm

-  - 18 pieces
- 20' - 180 pieces
- 40' - 414 pieces
- 13.6 m - 594 pieces

 : Pallet • 20': Container • 40': High cube container • 13.6 m: Trailer.

The information is to our best knowledge true and accurate but all recommendations or suggestions are made without guarantee.

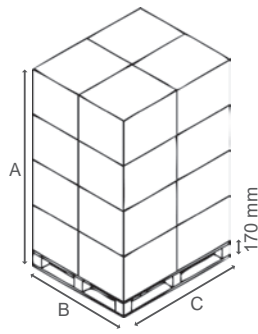
www.jonesco-plastics.com



JBZ520

A x B x C - 1450 x 1100 x 1300 mm

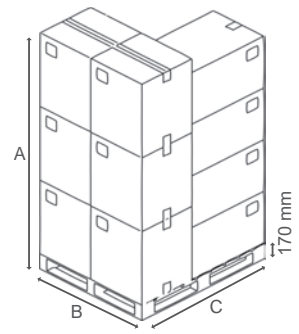
- 24 pieces
 20' - 192 pieces
 40' - 432 pieces
 13.6 m - 528 pieces



JBB600

A x B x C - 2100 x 1100 x 1300 mm

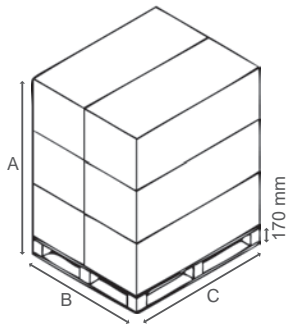
- 16 pieces
 20' - 128 pieces
 40' - 288 pieces
 13.6 m - 352 pieces



JBZ700

A x B x C - 2090 x 1100 x 1300 mm

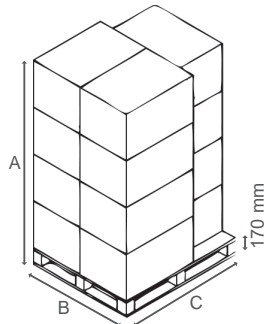
- 10 pieces
 20' - 80 pieces
 40' - 180 pieces
 13.6 m - 220 pieces



JBB900

A x B x C - 1640 x 1100 x 1300 mm

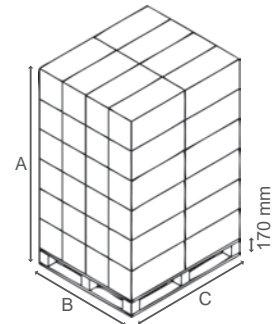
- 6 pieces
 20' - 48 pieces
 40' - 108 pieces
 13.6 m - 132 pieces



JBB80P-COOR

A x B x C - 2090 x 1100 x 1300 mm

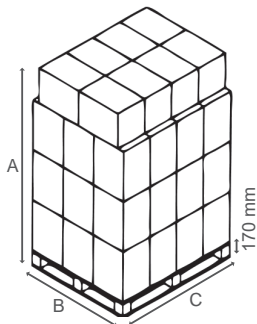
- 12 pieces
 20' - 96 pieces
 40' - 216 pieces
 13.6 m - 264 pieces



1005

A x B x C - 2030 x 1100 x 1410 mm

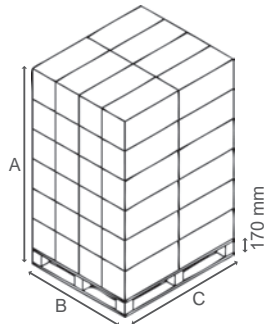
- 384 pieces
 20' - 3072 pieces
 40' - 6912 pieces
 13.6 m - 7680 pieces



1006

A x B x C - 2105 x 1110 x 1480 mm

- 220 pieces
 20' - 1320 pieces
 40' - 3520 pieces
 13.6 m - 3960 pieces

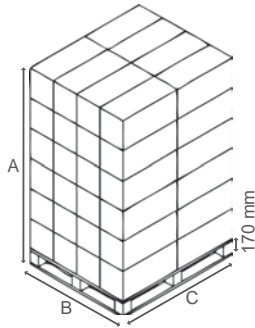


1008

A x B x C - 2100 x 1240 x 1300 mm

- 600 pieces
 20' - 4800 pieces
 40' - 10800 pieces
 13.6 m - 12000 pieces

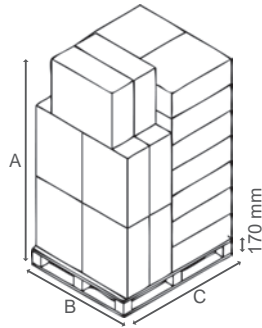
HEALTH & SAFETY



SERIES 70

A x B x C - 2030 x 1100 x 1410 mm

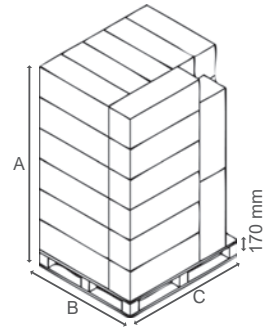
-  - 48 pieces
- 20' - 384 pieces
- 40' - 768 pieces
- 13.6 m - 864 pieces



SERIES 72


A x B x C - 2195 x 1150 x 1300 mm

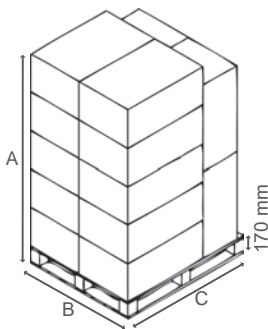
-  - 24 pieces
- 20' - 192 pieces
- 40' - 432 pieces
- 13.6 m - 480 pieces



SERIES 83


A x B x C - 2090 x 1100 x 1325 mm

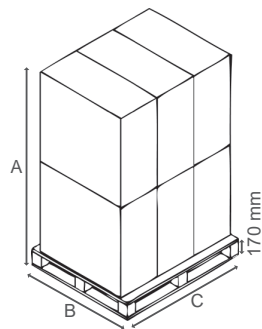
-  - 38 pieces
- 20' - 304 pieces
- 40' - 684 pieces
- 13.6 m - 836 pieces



SERIES 85


A x B x C - 2045 x 1100 x 1300 mm

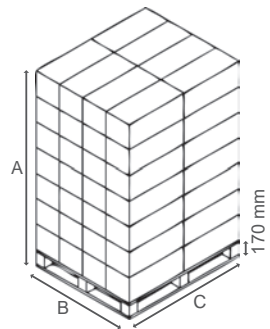
-  - 14 pieces
- 20' - 112 pieces
- 40' - 252 pieces
- 13.6 m - 308 pieces



SERIES 90

A x B x C - 1990 x 1100 x 1300 mm

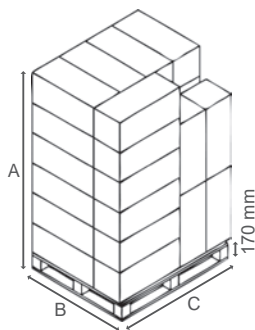
-  - 6 pieces
- 20' - 48 pieces
- 40' - 108 pieces
- 13.6 m - 132 pieces



SERIES 65


A x B x C - 1990 x 1100 x 1370 mm

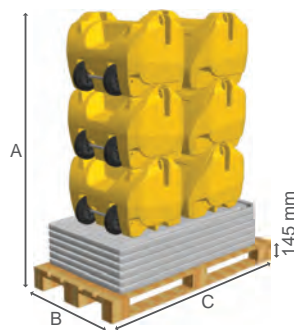
-  - 56 pieces
- 20' - 448 pieces
- 40' - 1008 pieces
- 13.6 m - 1120 pieces



SERIES 75

A x B x C - 2060 x 1100 x 1300 mm

-  - 34 pieces
- 20' - 272 pieces
- 40' - 612 pieces
- 13.6 m - 748 pieces



SitePoint

A x B x C - 1850 x 800 x 1600 mm

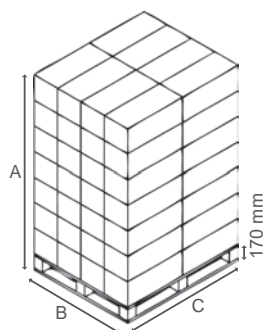
-  - 6 pieces
- 20' - 36 pieces
- 40' - 84 pieces
- 13.6 m - 144 pieces

 : Pallet • 20': Container • 40': High cube container • 13.6 m: Trailer.

The information is to our best knowledge true and accurate but all recommendations or suggestions are made without guarantee.

www.jonesco-plastics.com

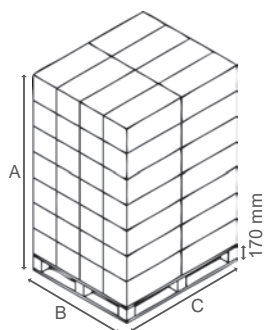
FIRE PROTECTION



SERIES 64 / 65

A x B x C - 1990 x 1100 x 1370 mm

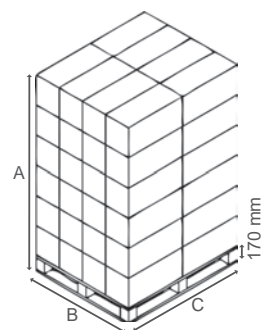
 - 56 pieces
 20' - 448 pieces
 40' - 1008 pieces
 13.6 m - 1120 pieces



SERIES 68

A x B x C - 1895 x 1100 x 1370 mm

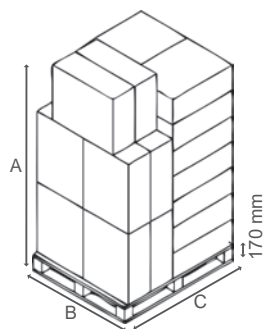
 - 56 pieces
 20' - 448 pieces
 40' - 1008 pieces
 13.6 m - 1120 pieces



SERIES 70


A x B x C - 2030 x 1100 x 1410 mm

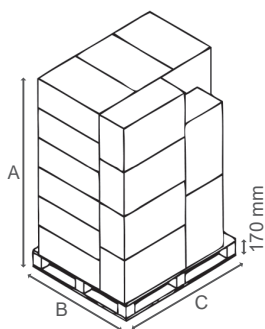
 - 48 pieces
 20' - 384 pieces
 40' - 768 pieces
 13.6 m - 864 pieces



SERIES 72

A x B x C - 2195 x 1150 x 1300 mm

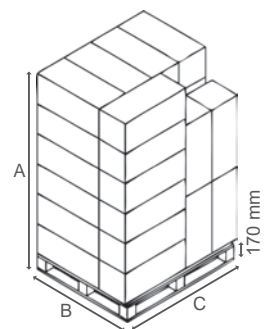
 - 24 pieces
 20' - 192 pieces
 40' - 432 pieces
 13.6 m - 480 pieces



SERIES 73


A x B x C - 1895 x 1100 x 1325 mm

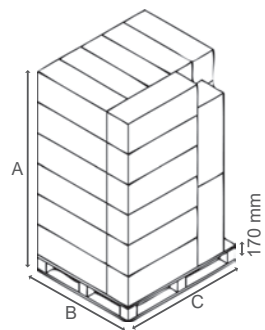
 - 24 pieces
 20' - 192 pieces
 40' - 432 pieces
 13.6 m - 480 pieces



SERIES 75


A x B x C - 2060 x 1100 x 1300 mm

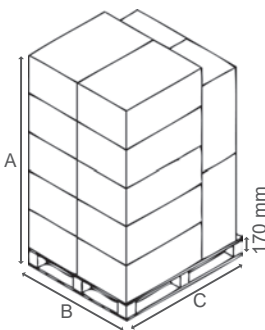
 - 34 pieces
 20' - 272 pieces
 40' - 612 pieces
 13.6 m - 748 pieces



SERIES 83

A x B x C - 2090 x 1100 x 1325 mm

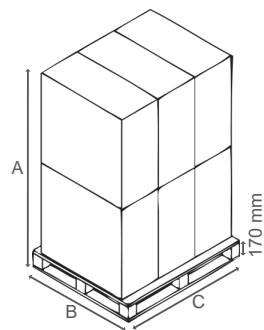
 - 38 pieces
 20' - 304 pieces
 40' - 684 pieces
 13.6 m - 760 pieces



SERIES 85

A x B x C - 2045 x 1100 x 1300 mm

 - 14 pieces
 20' - 112 pieces
 40' - 252 pieces
 13.6 m - 308 pieces



SERIES 90

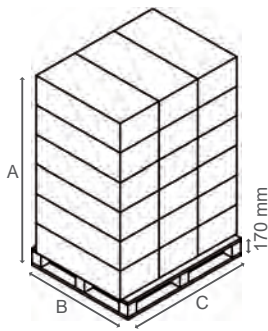
A x B x C - 1990 x 1100 x 1300 mm

 - 6 pieces
 20' - 48 pieces
 40' - 108 pieces
 13.6 m - 132 pieces

 : Pallet • 20': Container • 40': High cube container • 13.6 m: Trailer.

The information is to our best knowledge true and accurate but all recommendations or suggestions are made without guarantee.

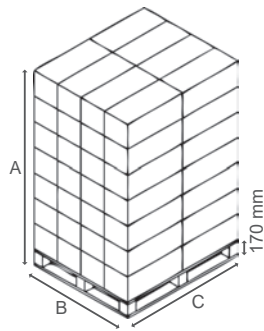
www.jonesco-plastics.com



SERIES 95

A x B x C - 1770 x 1100 x 1350 mm

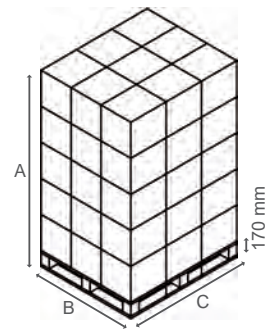
- 18 pieces
 20' - 144 pieces
 40' - 324 pieces
 13.6 m - 360 pieces



JFEX01

A x B x C - 1990 x 1100 x 1370 mm

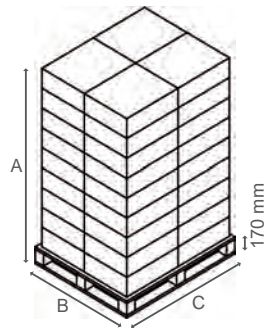
- 56 pieces
 20' - 448 pieces
 40' - 1008 pieces
 13.6 m - 1120 pieces



JFEX03

A x B x C - 2070 x 1200 x 1350 mm

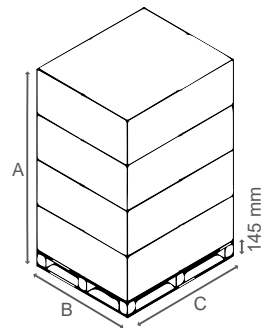
- 225 pieces
 20' - 1800 pieces
 40' - 3600 pieces
 13.6 m - 4050 pieces



SERIES 56

A x B x C - 1970 x 1100 x 1300 mm

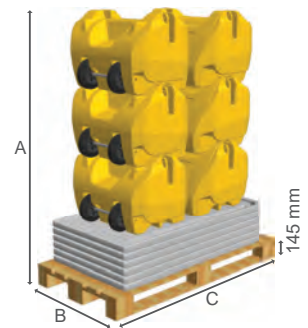
- 36 pieces
 20' - 288 pieces
 40' - 648 pieces
 13.6 m - 792 pieces



SERIES 100

A x B x C - 2065 x 1200 x 1000 mm

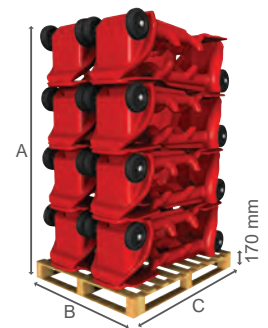
- 4 pieces
 20' - 44 pieces
 40' - 100 pieces
 13.6 m - 112 pieces



SitePoint

A x B x C - 1850 x 800 x 1600 mm

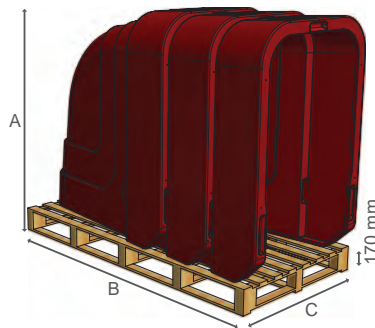
- 6 pieces
 20' - 36 pieces
 40' - 84 pieces
 13.6 m - 144 pieces



FireKart

A x B x C - 2050 x 1100 x 1300 mm

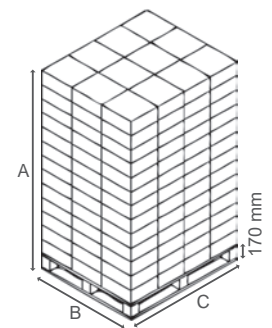
- 16 pieces
 20' - 128 pieces
 40' - 288 pieces
 13.6 m - 352 pieces



JES146

A x B x C - 1765 x 2100 x 1000 mm

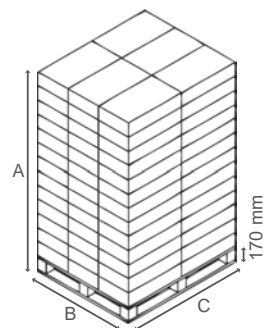
- 3 pieces
 20' - 15 pieces
 40' - 36 pieces
 13.6 m - 39 pieces



JFP1

A x B x C - 2120 x 1100 x 1300 mm

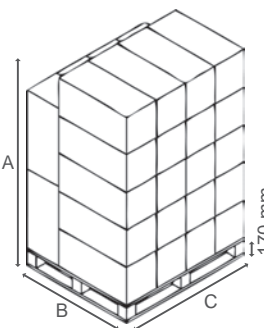
- 156 pieces
 20' - 1248 pieces
 40' - 2808 pieces
 13.6 m - 3432 pieces



JFP2

A x B x C - 2120 x 1100 x 1300 mm

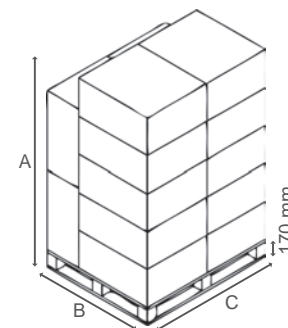
- 78 pieces
 20' - 624 pieces
 40' - 1404 pieces
 13.6 m - 1716 pieces



JFP3

A x B x C - 1970 x 1100 x 1320 mm

- 56 pieces
 20' - 448 pieces
 40' - 1008 pieces
 13.6 m - 1232 pieces



JFP4* / JFP6

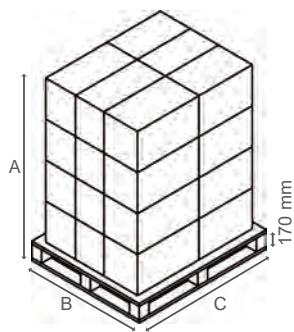
A x B x C - 1970 x 1115 x 1300 mm

- 28* / 14 pieces
 20' - 224* / 112 pieces
 40' - 504* / 252 pieces
 13.6 m - 560* / 280 pieces

: Pallet • 20': Container • 40': High cube container • 13.6 m: Trailer.


The information is to our best knowledge true and accurate but all recommendations or suggestions are made without guarantee.

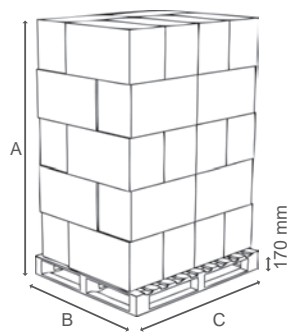
www.jonesco-plastics.com



JFP7


A x B x C - 2080 x 1100 x 1300 mm

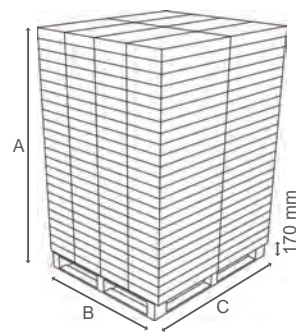
 - 48 pieces
 20' - 384 pieces
 40' - 864 pieces
 13.6 m - 1056 pieces



JFP8

A x B x C - 1935 x 1100 x 1300 mm

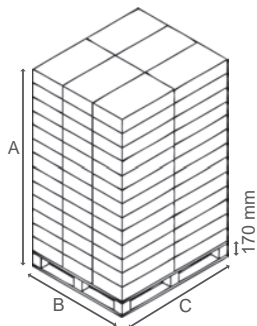
 - 60 pieces
 20' - 480 pieces
 40' - 1080 pieces
 13.6 m - 1320 pieces



JFP9


A x B x C - 2015 x 1180 x 1300 mm

 - 176 pieces
 20' - 1408 pieces
 40' - 3168 pieces
 13.6 m - 3520 pieces



JFP10

A x B x C - 2015 x 1100 x 1300 mm

 - 88 pieces
 20' - 704 pieces
 40' - 1584 pieces
 13.6 m - 1936 pieces





APPENDIX

ENVIRONMENTAL LEGISLATION	74
DIBt (Ü)	78
CUSTOMER SERVICE	79
CONDITIONS OF SALE & DELIVERY	80



LEGISLATION / USEFUL INFORMATION

The use of Jonesco products for the storage and handling of drums and intermediate bulk containers complies with UK legislation current at the time of printing. Ensure you comply with laws of England, Wales, Scotland and Northern Ireland regarding the control of oil related pollution. It applies to anyone who stores and controls oil above ground. There are penalties for non-compliance. For further information and guidance, please refer to:

England / Wales: www.gov.uk/guidance/storing-oil-at-a-home-or-business

Scotland: www.legislation.gov.uk/ssi

Northern Ireland: www.legislation.gov.uk/nisr

If you store oil of any kind at your premises, this will apply to you. Oil includes: petrol, diesel, central heating oil, lubricating oil, vegetable oil, heavy oils such as bitumen; oils used as solvents, such as paraffin or kerosene and waste oil.

Oil is a common and highly visible form of pollution. It is poisonous to fish and other wildlife and smothers plants. Just two litres of oil could make the volume of fresh water needed to fill an Olympic size swimming pool undrinkable. Oil accounts for over one quarter of all pollution incidents in the UK each year. Many drains lead directly to rivers, streams or lakes. If you allow oil to enter these drains, it has the same effect as pouring it directly into the watercourse. If oil from your site enters the ground or watercourses, you can be required to pay clean-up costs to remove the oil.

What should I do if an oil spill occurs?

- Try to prevent the spill from entering drains or watercourses; use earth to block its flow, sand or commercial absorbents to soak it up.
- Notify your Environmental Regulator on the Emergency Hotline, 0800 80 70 60.
- Keep absorbent materials near to the oil store so that they are easily accessible when they are needed.
- Train all staff in what to do in the event of a spillage and how to use any oil spill equipment.
- Never hose a spillage down or use detergents to disperse it.

POLLUTION PREVENTION GUIDELINES

STORAGE & HANDLING OF DRUMS & INTERMEDIATE BULK CONTAINERS

SECONDARY CONTAINMENT SYSTEMS

A secondary containment system is designed to catch leaks from the primary container or spillages when in use. A suitable secondary containment system should be provided, as this will significantly reduce the risk of a spill resulting in pollution.

CAPACITY

The capacity of secondary containment facilities should take account of the maximum volume of product that could be stored at any one time. If a fixed fire-fighting system is in place, additional provision will be required for the quantity of fire-fighting media likely to be used. In general, for multiple container storage, containment facilities should have sufficient capacity to contain at least 25% of the total volume of the containers being stored, or 110% of the largest container, whichever is the greater.

DEALING WITH SPILLAGES

Spill kits containing materials such as leak-sealing putty, over-drums, drain seals, oil or chemical absorbents and personal protective equipment (PPE) should be on site. These should be located both within and near the storage area and remote from it (in case during an event it is not possible to reach the equipment near the storage containers).

POLYETHYLENE – ELECTROSTATIC PROPERTIES

While polyethylene is a non-conductive material, it will allow electrostatic charge to build up on the surface.

REGLEMENTATION / RENSEIGNEMENTS UTILES

Arrêté type - Rubrique n° 1173: Dangereux pour l'environnement, B - Toxiques pour les organismes aquatiques (stockage et emploi de substances). (JO 22/01/99).

Selon l'arrêté du 02/02/1998 relatif aux prélèvements et à la consommation d'eau ainsi qu'aux émissions de toute nature des installations classées pour la protection de l'environnement soumises à autorisation:

Tout stockage d'un liquide susceptible de créer une pollution des eaux ou des sols doit être associé à une capacité de rétention dont le volume doit être au moins égal à la plus grande des deux valeurs suivantes:

- 100% de la capacité du plus grand réservoir.
- 50% de la capacité des réservoirs associés.

Pour le stockage de récipients de capacité unitaire inférieure ou égale à 250 litres (jerricans, fûts) la capacité de rétention doit être au moins égale à:

- 50% de la capacité totale des récipients pour les liquides inflammables, à l'exception des lubrifiants.
- 20% de la capacité totale des récipients pour les autres cas.
- 800 litres minimum ou égale à la capacité totale lorsque celle-ci est inférieure à 800 litres.

La capacité de rétention doit être étanche aux produits qu'elle pourrait contenir et résister à l'action physique et chimique des fluides. Tous nos produits sont en polyéthylène, matière thermoplastique ayant une très bonne résistance chimique à tous les types de produits dits dangereux.

POLYÉTHYLÈNE – PROPRIÉTÉS ÉLECTROSTATIQUE

Bien que le polyéthylène soit un matériau non conducteur, il permettra aux charges électrostatiques de s'accumuler à la surface.



LEGISLACION / INFORMACION UTIL

El almacenamiento de productos peligrosos responde a reglas de seguridad estrictas en materia de retención. Real Decreto 656/2017, de 23 de junio, por el que se aprueba el Reglamento de Almacenamiento de Productos Químicos y sus Instrucciones Técnicas Complementarias (ITC) MIE APQ 0 a 10, define en la ITC 10, de Almacenamiento de Recipientes Móviles, la capacidad de retención mínima que debe tener un cubeto de retención.

Se define en el punto 2 del artículo 10 de la mencionada ITC:

VOLUMEN DE RETENCIÓN PARA RECIPIENTES MÓVILES

La capacidad de retención tiene que ser igual o superior al mayor de los dos valores siguientes:

- 100% de la capacidad del depósito más grande.
- 10% de la capacidad total de los depósitos que vierten en el cubeto.

POLIETILENO – PROPIEDADES ELECTRO-ESTATICAS

Nota de atención, el polietileno es un material no conductor, por lo que existe potencial de estática acumulada en la superficie.



VORSCHRIFTEN & INFORMATIONEN ZUR GEFÄHRSTOFFLAGERUNG

AUSWAHL RELEVANTER GESETZE UND VORSCHRIFTEN

ADR	Verordnung über die Beförderung gefährlicher Güter auf der Straße
BetrSichV	Betriebssicherheitsverordnung
GGVS / GGVE	Gefahrgutverordnung Straße / Eisenbahn
RID	Vorschriften der Ordnung über die internationale Eisenbahnbeförderung gefährlicher Güter
AwSV	Verordnung über Anlagen zum Umgang mit wassergefährdenden Stoffen (spezifisch für jedes Bundesland)
WHG	Wasserhaushaltsgesetz

WASSERGEFÄHRDUNGSKLASSEN NACH AwSV

- WKG 1** schwach wassergefährdend
- WKG 2** wassergefährdend
- WKG 3** stark wassergefährdend

AUFFANGVOLUMEN

In Deutschland muß eine Auffangwanne den Inhalt des größten Behälters, mindestens jedoch 10% der Lagermenge, aufnehmen können.

Auf unsere Auffangwanne SJ-100-001/D angewandt bedeutet dies :

bei einer Lagerung von 2 Fässern von je 215 Liter Inhalt

- Gesamt-Lagermenge = 430 l, 10% = 43 l
- größter Behälter = 215 l

gefordertes Wannenvolumen = 215 Liter

!!! In Wasserschutzgebieten muß die gesamte Lagermenge (100%) zurückgehalten werden !!!

ZULASSUNGEN

Für Auffangsysteme aus nichtmetallischen Werkstoffen werden vom DIBt in Berlin (Deutsches Institut für Bautechnik) allgemeine bauaufsichtliche Zulassungen erteilt.

PE-AUFFANGSYSTEME

Für die Lagerung von wassergefährdenden Flüssigkeiten aller Gefährdungsklassen (siehe vor). PE-Auffangwannen sind beständig gegen Öle, Säuren und Laugen. Der Anwender ist für die Verträglichkeit mit den eingelagerten Stoffen verantwortlich. Hilfreich bei der Auswahl sind Beständigkeitslisten.

In Deutschland für die Lagerung von brennbaren Medien nicht zugelassen.

ACHTUNG

Obige Angaben sind unverbindlich, gelten ausschließlich für Deutschland, und erheben keinen Anspruch auf Vollständigkeit.

Bitte beachten Sie die für Ihr Land gültigen Vorschriften. Setzen Sie sich bitte mit Ihrer zuständigen Behörde in Verbindung.

POLYETHYLEN – ELEKTROSTATISCHE EIGENSCHAFTEN

Obwohl Polyethylen ein nicht leitfähiges Material ist, kann eine elektrostatische Aufladung auf der Oberfläche entstehen.



LEGISLATION / USEFUL INFORMATION

Jonesco Environmental Protection Products comply with or exceed regulations.

ENVIRONMENTAL PROTECTION AGENCY

EPA 40 CFR 264.175

CONTAINMENT. (a) Container storage areas must have a containment system that is designed and operated in accordance with paragraph (b) of this section, except as otherwise provided by paragraph (c) of this section.

(b) A containment system must be designed and operated as follows:

(3) The containment system must have sufficient capacity to contain 10% of the volume of containers or the volume of the largest container, whichever is greater. Containers that do not contain free liquids need not be considered in this determination.

SPILL PREVENTION, CONTROL AND COUNTERMEASURES (SPCC) REGULATION

What is SPCC and who is subject to its requirements? SPCC stands for Spill Prevention Control and Countermeasures. This rule is part of the EPA's oil spill prevention program and was developed under the authority of The Federal Water Pollution Control Act and The Clean Water Act. It is designed to prevent discharge of oil and oil-related materials into US waterways or adjoining shorelines. The SPCC Rule outlines the requirement of owners and operators of large oil processing facilities and industrial, commercial, agricultural or public facilities using/storing oil or oil products to create and implement a Spill Prevention Control and Countermeasures plan.

Facilities with **1,320 U.S. gallons of above ground storage or 42,000 U.S. gallons of buried storage** of petroleum oil and non-petroleum oils; fats, oils and greases of animals, fish and marine mammals and vegetable oils (including oil from seeds, nuts, fruits, or kernels) are covered by the SPCC rule.

APPLICATION TO SPILL CONTROL PRODUCTS. The SPCC Rule outlines the requirement of an owner / operator to demonstrate in their SPCC plans considerations for secondary containment solutions for containers with storage capacity equal to or greater than 55 U.S. gallons. Each secondary containment must hold the entire capacity of the largest container. The Plan must include a facility diagram, and mark the location and contents of each container. Secondary containment must be constructed so that any discharge from a primary containment system (i.e. drum, tank or pipe) will not escape before cleanup occurs.

INTERNATIONAL CODE COUNCIL

INTERNATIONAL FIRE CODE, 2009 EDITION*

2704.2.3 Containment pallets. When used as an alternative to spill control and secondary containment for outdoor storage in accordance with the exception in Section 2704.2, containment pallets shall comply with all of the following:

1. A liquid-tight sump accessible for visual inspection shall be provided.
2. The sump shall be designed to contain not less than 66 gallons (250 l).
3. Exposed surfaces shall be compatible with material stored.
4. Containment pallets shall be protected to prevent collection of rainwater within the sump.

NATIONAL FIRE PROTECTION ASSOCIATION

NFPA CODE 30 2018 EDITION:**

9.13 * CONTAINMENT, DRAINAGE AND SPILL CONTROL

9.13.1 Storage areas shall be designed and operated to prevent the discharge of liquids to public waterways, public sewers, or adjoining property, unless such discharge has been specifically approved.

9.13.2 Where individual containers exceed 10 gal (38 l), curbs, scuppers, drains, or other suitable means shall be provided to prevent flow of liquids under emergency conditions into adjacent building areas.

U.S. DEPARTMENT OF LABOR

OCCUPATIONAL SAFETY AND HEALTH ADMINISTRATION

OSHA 29 CFR 1910.106 (e)(2)(iii):

Separation and protection. Areas in which flammable or combustible liquids are transferred from one tank or container to another container shall be separated from other operations in the building by adequate distance or by construction having adequate fire resistance. Drainage or other means shall be provided to control spills. Adequate natural or mechanical ventilation shall be provided.

POLYETHYLENE – ELECTROSTATIC PROPERTIES

While polyethylene is a non-conductive material, it will allow electrostatic charge to build up on the surface.

* Excerpted from the 2009 International Fire Code, Copyright 2009. Washington, D.C.: International Code Council. Reproduced with permission. All rights reserved. www.ICCSAFE.org

** Reproduced with permission from NFPA CODE 30-2018. This is not the complete and official position of the NFPA on the referenced subject, which is represented only by the standard in its entirety.

DIBt (Ü)

SPILL CONTAINMENT WITH NATIONAL TECHNICAL APPROVAL GRANTED BY THE GERMAN INSTITUTE OF BUILDING TECHNOLOGY IN BERLIN

In Germany, various plastic spill containment products require national technical approval granted by the DIBt (Deutsches Institut für Bautechnik) in Berlin. To comply with these approvals certain criteria have to be fulfilled, e.g. liquid capacity testing and load testing. Our spill containment products are approved according to DIBt requirements by a recognised testing, inspection and certification body on behalf of DIBt.

Capacity Measurement

Generally	DIBt Requirement
Specified by manufacturer	Specified by DIBt*

Operating Load

Generally	DIBt Requirement
Specified by manufacturer	According to the number of drums, IBCs, etc. specified**

To order spill containment products for the German market: Please add 'D' to the part number. (e.g. SJ-100-001/D).

	PLATFORM COLOUR	BUND COLOUR	CENTRAL SUPPORT COLOUR	CERTIFICATE NUMBER	CAPACITY* (ℓ)	UNIFORMLY DISTRIBUTED WEIGHT** (kg)
DRUM SPILL PALLETS						
SJ-100-001/D	●	●	-	Z-40.22-380	236	500
SJ-100-007/D	●	●	-	Z-40.22-380	242	1000
SJ-100-010/D	●	●	-	Z-40.22-380	450	1000
SJ-100-050/D	●	●	-	Z-40.22-380	225	250
SJ-100-060/D	●	●	-	Z-40.22-380	220	1000
SJ-110-007/D	●	●	-	Z-40.22-380	220	1000
SJ-2E-BLK/D	-	●	-	Z-40.22-380	220	500
SJ-2E-BLK/D & SJ-2E-PLAT	●	●	-	Z-40.22-380	220	500
DRUM RACK DISPENSING STATION						
SJ-200-004/D	●	●	-	Z-40.22-380	450	500
SPILL WORKFLOORS						
SJ-300-002/D	●	●	-	Z-40.22-443	92	500
SJ-300-007/D	●	●	-	Z-40.22-443	192	1000
IBC SPILL PALLETS						
SJ-500-002/D	●	●	○	Z-40.22-451	1000	2000
SJ-500-004/D	●	●	○	Z-40.22-451	1000	4000 (2000 per side)
SJ-500-006/D	-	●		Z-40.22-451	1000	2000
SJ-510-002/D	●	●	○	Z-40.22-451	1000	2000
SJ-520-002/D	●	●	○	Z-40.22-451	1000	3000 (1500 per side)
SJ-545-BLK/D	-	●	-	Z-40.22-451	1000	3000 (1500 per side)
SPILL TRAYS						
ST1-20-B-BK/D	-	●	-	Z-40.22-485	20	50
ST1-20-BK-BK/D	●	●	-	Z-40.22-485	20	50
ST1-30-B-BK/D	-	●	-	Z-40.22-485	30	50
ST1-30-BK-BK/D	●	●	-	Z-40.22-485	30	50
ST1-40-B-BK/D	-	●	-	Z-40.22-485	40	100
ST1-40-BK-BK/D	●	●	-	Z-40.22-485	40	100
ST1-60-B-BK/D	-	●	-	Z-40.22-485	60	200
ST1-60-BK-BK/D	●	●	-	Z-40.22-485	60	200
ST1-100-B-BK/D	-	●	-	Z-40.22-485	100	200
ST1-100-BK-BK/D	●	●		Z-40.22-485	100	200

CUSTOMER SERVICE

Our success and continued growth is a reward from our customers who find Jonesco's service and products the best available. We aim to ensure this situation continues and will always be pleased to talk with you about our product and service performance. Customer service is a high priority for Jonesco and we aim to meet the highest standards. In order to achieve efficient handling of any problem arising from our products or service we provide this guide to our procedures for resolving problems.

How to order goods

To place an order we require you to state the following:

1. Jonesco part numbers and quantity required
2. Requested despatch date
3. Order number and authorising person's name

We accept orders by telephone and e-mail. All orders should be confirmed in writing, where possible, although such orders must be marked confirmation to avoid duplication.

What to do if my order is late arriving

1. Ring / E-mail Jonesco on +44 (0) 1772 706888 / orders@jonesco-plastics.com (8am to 5pm, 4.30pm Fridays).
2. Ask for customer services, quote your company name and advise of the problem. They will then check whether it has been despatched and by which method. If it is a carrier problem we will contact the carrier and ring back with all the information we can obtain. If the goods have not left yet we will advise of the new expected despatch date. If the goods are not specifically manufactured for you, you may alter the order to buy an alternative product.

What if the carrier arrives and the note says two but the carrier has one

1. Write on the advice note "Only received one".
2. Ring Jonesco customer services and advise of the shortage who will ring the carrier and keep you informed.

Stock cleanse

Jonesco does not participate in stock cleanses.

We supply goods in good faith and not on a sale or return basis. We will only accept goods back for credit in certain rare circumstances unless there is a specific fault in the product or supply attributable to Jonesco.

Credits will not be issued for goods unless approval for return is granted within 28 days following the date on the advice note.

Your part numbers

If you advise Jonesco of the part numbers you allocate to our product, we will enter them into our system and all paperwork will then show both yours and our part numbers for easy reference.

What if the carrier arrives but the goods are damaged

1. All goods should be counted and checked in the presence of the carrier. Signing the delivery note waives all rights to insurance should the goods be found to be damaged. Signing the proof of delivery note "Unchecked" or similar is not accepted by the carriers and is deemed a signature accepting the goods in the number and condition received.
2. Ring Jonesco customer services and advise of the damage who will ring the carrier and keep you informed.

What to do if it is not the correct product / I ordered the wrong item

1. Contact our sales or sales / quality department to see if return is viable and acceptable.
2. You will be issued with a returns number and we will advise if we are able to collect the goods on our own vehicles or you can send the goods back by carrier. Jonesco does not accept the carriage charges where the goods were supplied correctly to order.

Where goods are not faulty, they should be returned in a re-saleable condition complete with original undamaged packaging and quality labels. Special products such as colours are not accepted for return.

Warranty

Our products, generally, have no moving parts and will not deteriorate in their expected life span apart from "normal wear or misuse".

We will always be willing to examine any problems you may have with the products we supply to minimise quality problems or any issues that may arise.

IMPORTANT POINTS TO REMEMBER

- A returns authorisation number must be obtained before the return of any product.
- Failure to use this number on the returned goods could result in the return being refused.
- The packaging must be sufficient to prevent damage to the product that could affect your claim.
- A returns number is valid for 14 days only.
- Where possible we will collect goods on our own vehicle and only reimburse return carriage if Jonesco or our product is found to be at fault.
- Our quality control or sales staff may wish to visit your site to offer advice on the storage, handling or use of the products to minimise returns or damage in the future.
- Export accounts should seek authorisation from their usual Jonesco contact for any problem before any action as carriage cost can easily exceed the value of the goods to be returned. An economical solution can then be arranged depending upon the specific circumstances.

CONDITIONS OF SALE AND DELIVERY

The Customer's attention is drawn in particular to the provisions of clause 13.

1. GENERAL

- a. These conditions shall be deemed to be incorporated as conditions in any order or contract accepted by Jonesco (Preston) Ltd (hereinafter referred to as 'Jonesco', 'Us' and 'We') to the exclusion of any other terms that you, the Customer (also referred herein after as 'You') seek to impose or incorporate, or which are implied by trade, custom, practice or course of dealing.
- b. The Customer is responsible for ensuring the Goods ordered are suitable for the purpose for which they were required.
- c. The contract constitutes the entire agreement between the parties.
- d. No agent or stockist or other third party and no employee of ours other than a director of Jonesco selling our Goods is authorised to transact any business which gives any warranty, makes any promise or any representation or incurs any liability on our behalf.
- e. We reserve the right to alter our product designs or construction details without notice.
- f. When these conditions or any other conditions which any other party may seek to incorporate into any contract conflict, these conditions shall prevail.
- g. Any notice required to be served pursuant to these conditions shall be served as follows:
 - i. To the Seller - To Jonesco (Preston) Ltd, Pitman Way, Fulwood, Preston, Lancashire, United Kingdom, PR2 9ZD.
 - ii. To the Customer - to such address as the Customer may notify to us or in default of notification to the address from which the goods are / or services are or were ordered or if the Customer are a company, at our option to the Customer's registered office.

A properly addressed notice sent by first-class post to destinations in the United Kingdom or the Republic of Ireland shall be deemed to have been received three days after the date of its despatch. A Notice sent by registered airmail to any other destination shall be deemed to have been received seven days after the date of its despatch.
- h. The provisions of clause 1(g) shall not apply to the service of any proceedings or other documents in any legal action.

2. TERMS OF PAYMENT

- a. United Kingdom and Eire: Payment by last working day of the month following the date of invoice. Time of payment is of the essence. Pending the opening of a credit account all Goods must be paid for in advance.
- b. Other Overseas: The method of payment shall be determined prior to or at the time of confirmation of the order. Any bank charges on export bills are payable by the Customer.
- c. If the Customer fails to make any payment due to Us under the Contract by the due date for payment (due date) then the Customer shall pay interest at the rate of 2% per month on extended terms of payment and overdue accounts. Such interest shall accrue on a monthly basis from the due date until the date of actual payment of the overdue amount, whether before or after judgment. the Customer shall pay the interest together with the overdue amount.
- d. The Customer shall on demand indemnify Us against all costs and expenses (including legal and other reasonable professional costs and expenses) suffered or incurred by Us in connection with the recovery of an outstanding debt in breach of clause 2(a) or 2(b) as applicable. This clause 2(d) shall survive termination of the Contract.
- e. When the account of a Customer becomes overdue, We may at our discretion withhold or suspend performance of any contractual obligation to you.
- f. The Customer shall pay all amounts due under the Contract in full without any deduction or withholding except as required by law and the Customer shall not be entitled to assert any credit, set-off or counterclaim against Us in order to justify withholding payment of any such amount in whole or in part. We may at any time, without limiting any other rights or remedies We may have, set off any amount owing to Us by the Customer against any amount payable by Us to the Customer.

3. TITLE

- a. Property in the Goods shall remain with Us until the Customer has paid to Us the price of all Goods supplied under the Contract for the supply of the Goods and all other sums owing at any time by the Customer to Jonesco on any ground whatsoever (including, without prejudice to the generality of the foregoing, all sums owing by the Customer to Jonesco at any time in respect of any supply of Goods under any other contract).
- b. The Customer undertake that until title has passed to the Customer, in the event that it buys from a party other than Jonesco supplies of goods that are or were manufactured by or sold by Jonesco (or are similar to such goods) with the intention of retaining such goods as stock the Customer will clearly mark each of those goods in the said supply in order to distinguish each of those goods from Goods sold by Jonesco to You.
- c. Until title to the Goods has passed to the Customer, the Customer shall:
 - i. hold the Goods on a fiduciary basis as our bailee;
 - ii. not remove, deface or obscure any identifying mark or packaging on or relating to the Goods;
 - iii. maintain the Goods in satisfactory condition and keep them insured against all risks for their full price from the date of delivery;
 - iv. give Jonesco such information relating to the Goods as We may require from time to time,
 - v. notify Jonesco immediately if the Customer becomes subject to any of the events listed in clause 16(b),
- d. Subject always to and without prejudice to clause 3(c) above, You are entitled to sell the Goods to a purchaser or purchasers by way of bona fide sale in the ordinary course of business at any time that (and insofar as) Jonesco shall permit and provided always that your entitlement shall cease immediately and without notice on the occurrence of any one or more of the events specified in clause 16(b).
- e. If before title to the Goods passes to the Customer, the Customer becomes subject to any of the events listed in clause 16(b), or We reasonably believe that any such event is about to happen and notify the Customer accordingly, then, provided that the Goods have not been resold, or irrevocably incorporated into another product, and without limiting any other right or remedy:
 - i. We may at any time require the Customer to deliver up the Goods, and if the Customer fails to do so promptly, the Customer irrevocably grants Jonesco a licence to enter (by Jonesco itself, its servants or agents and with or without vehicle) without notice upon lands or premises owned, used or occupied by You

for the purpose of taking possession of Goods the property of Jonesco; and

- ii. agree to render without charge all assistance as Jonesco may request to Jonesco and to our servants or agents for the purpose of Jonesco's identifying and taking possession of Goods the property of Jonesco.
- f. In the event that You sell the Goods to a purchaser or purchasers in accordance with clause 3(e), You sell as principal in relation to the purchaser or purchasers and have no right to commit Jonesco to any contractual relationship with or liability to the purchaser or purchasers or any third party.
- g. The Customer undertakes that in the event that You sell any Goods supplied by Jonesco You will sell those Goods (of the type required for the particular sale) as have at the material time been longest in your possession.

4. PRICES

- a. All prices are subject to alteration without notice. If during the currency of any contract there is an increase in the cost of labour and / or material required in connection with or the purpose of such contract over the cost of such labour and / or materials prevailing at the date of acceptance such nett increase of cost shall be added to the contract price and be payable by the Customer.
- b. All prices are subject to the addition of VAT when appropriate, the Customer shall, on receipt of a valid VAT invoice, pay such additional amounts in respect of VAT as are chargeable on the supply of the Goods.
- c. Special orders placed with Jonesco may be subject to variances from the normal list price. Quotations of price will be given at the time of order placement and will be deemed to be binding solely for that particular Special Order.

5. CARRIAGE

- a. UK Mainland: The method of carriage shall be determined by Us and carriage charges will be payable by the Customer in addition to the price of Goods:
 - i. we will use our reasonable endeavours to notify the Customer of the carriage charges prior to delivery of the Goods;
 - ii. if the Customer requests a particular method or time of delivery or other particular arrangements for delivery of the Goods the Customer will be reimburse Jonesco for any additional costs incurred in delivery of the Goods.
- b. UK non-mainland and Eire: carriage charges will be advised to the Customer prior to Jonesco's acceptance of the Customer's order.
- c. Where practical, and under our discretion, We will deliver Goods on our own vehicles. All such deliveries will be free of charge if over £50 if part of a planned delivery run. Due to their bulk environmental products do not qualify for this service.

6. PACKING

- a. United Kingdom: any stillages or custom packaging remain our property at all times and will be charged for if not returned in good condition within one month from the date of delivery.
- b. Overseas: Export packing will be charged extra. Cases are non-returnable.

7. RISK, DAMAGE, LOSS AND NON-DELIVERY

- a. Risk in the Goods will pass to the Customer upon:
 - i. Delivery of the Goods to the Customer's premises or to a third party address as instructed by the Customer in respect of a sale to a UK or Eire based customer; and
 - ii. Delivery f.o.b. UK Port in respect of any sale to an overseas based customer (unless otherwise agreed between the parties in writing)
- b. The Customer must inform Us within three (3) days of the date of passage of risk pursuant the clause 8(a) below (or the date of advised delivery in the case of non-deliveries) if a claim for damage, loss in transit, or non-delivery of any of the Goods is to be made and must follow up such notification with a written confirmation within 7 days. In respect of the Customer's obligation here under, time shall be of the essence. **NO CLAIMS WILL BE CONSIDERED AND NO LIABILITY ACCEPTED BY US UNLESS NOTIFICATION IS RECEIVED WITHIN THE TIME SPECIFIED.**

8. RETURNED GOODS

- a. All Goods correctly supplied in accordance with Customer's order but which are subsequently returned will only be credited provided that:
 - i. Our prior written consent has been obtained. We reserve the absolute right to decline to accept returns.
 - ii. The Goods are listed in the current price list, are of current design, and in resaleable condition including packaging.
 - iii. The Goods must be accompanied by a packing note stating the reason for return, the advice note / invoice number against which the Goods were supplied and the returns authority number as provided by the Despatch Department of Jonesco. A Jonesco returns label should also be attached to the Goods.
 - iv. The cost of the outward carriage is paid by the Customer, and a handling charge will be payable by the Customer when the Goods are exchanged. The value of the handling charge will be at Our discretion and will be quoted as a percentage of the net invoice value of the goods returned.

Goods supplied correct to customer specification on Special Orders placed with Jonesco are not accepted for return.

9. DESCRIPTION

- a. Whilst every endeavour has been made to ensure that the Goods are accurately described and believed to be fit for the purpose as mentioned in our catalogues, wall charts etc, no warranty or representation to this effect is given, and no responsibility will be accepted in the event of any error or misdescription or any such unfitness, or any damage relating there from.
- b. Photographs, illustrations, advertising matter and technical brochures generally represent the goods offered but are not binding in detail.
- c. We reserve the absolute right to make detailed alterations to the materials and specifications.
- d. Weights, dimensions, electrical power, water and compressed air and other supplies data, are estimated and deviations shall not be a ground for claim against Us.

10. DELIVERY OR ORDERS BY SCHEDULE

Orders on which deliveries are to be made at a scheduled rate are accepted on the following conditions:

- i. no delay of delivery can be taken as agreed unless You have received Our prior written consent.
- ii. delay of any delivery beyond two months from the date originally agreed will not be accepted.
 - iii. at least 14 days notice must be given of any intention to delay deliveries.
 - iv. where We agree to a delay of delivery at a Customer's request We reserve the right to adjust the prices, if We find this necessary, and to make a charge for any extra costs incurred because of the delay.
 - v. each delivery shall constitute a separate transaction.
 - vi. quantities delivered in each time period in the schedule will be subject to a tolerance agreed in advance between Jonesco and the Customer.

11. DELIVERY QUOTATION

- a. Any date quoted for despatch is subject to stock remaining unsold upon receipt of the Customer's written order to proceed together with all necessary information and documents.
- b. Whilst every effort will be made to estimate delivery dates accurately they are not to be construed as forming part of the terms of the contract and time of delivery is not of the essence.
- c. Should We be delayed in or prevented from delivering the whole or any part of the Goods ordered by reason of any Force Majeure Event or the Customer's failure to provide Us with adequate delivery instructions or any other instructions that are relevant to the supply of the Goods then:
 - i. the Customer shall not be entitled to refuse to accept the Goods because of delay in delivery;
 - ii. we shall not be liable to the Customer for failure to despatch or deliver such Goods, and
 - iii. the date of delivery shall be extended until the operation of the cause or causes preventing delivery has ceased.

PROVIDED THAT in the event of such delay continuing for an unbroken period of 60 days We shall have the right by notice in writing to terminate the contract or contracts in question to the extent that they shall not have already been performed.

12. WARRANTIES

- a. Subject to the conditions set out below We warrant that the Goods will:
 - i. correspond with their specification at the time of delivery; and
 - ii. be free from defects in material and workmanship for a period of 12 months from the date of delivery.
- b. The above warranty is given subject to the following conditions:-
 - i. we shall be under no liability in respect of any defect in the Goods arising from any drawing, design or specification supplied by You as the Customer;
 - ii. we shall be under no liability in respect of any defect arising from fair, wear and tear, wilful damage, negligence, abnormal working conditions, failure to follow our instructions (whether oral or in writing), carelessness on the part of the user, misuse or alteration or repair of the Goods without our approval;
 - iii. we shall be under no liability under the above warranty (or any other warranty condition or guarantee) if the total price for the Goods has not been paid by the due date for payment;
 - iv. the above warranty does not extend to parts, materials or equipment not manufactured by Us in respect of which You the Customer shall only be entitled to the benefit of any such warranty or guarantee as is given by the manufacturer to Us;
- c. Subject as expressly provided in these conditions, and except where the Goods are sold to a person dealing as a consumer (within the meaning of the Unfair Contract Terms Act 1977), all warranties, conditions or other terms implied by statute or common law as to quality, fitness, compliance with description or sample of the whole or part of the Goods, or any replacement thereof, or as to the quality of any work or repair or replacement or otherwise, are excluded to the fullest extent permitted by law.
- d. Any claim by You as a Customer which is based on a breach of clause 12(a) shall (whether or not delivery is refused by You) be notified to Us in writing within 7 days from the date delivery or (where the defect or failure was not apparent on reasonable inspection) within a reasonable time after discovery of the defect or failure. If delivery is not refused, and You do not notify Us accordingly, You shall not be entitled to reject all or part of the Goods and We shall have no liability for such defect or failure, and You shall be bound to pay the price as if the Goods had been delivered in accordance with the contract.

Where the Goods are delivered to premises outside of the United Kingdom the period of 7 days in this clause 12(d) shall be extended to 28 days;

- e. Where any valid claim in respect of any of the Goods which is based on any breach of clause 12(a) is notified to Us in accordance with these conditions, We shall at our absolute discretion be entitled to replace the Goods (or the part in question) free of charge or, refund to You the price paid for the Goods (or a proportion as part of the price paid), but We shall have no further liability to You;

13. LIMITATION OF LIABILITY

- a. Nothing in these Conditions shall limit or exclude Jonesco's liability for:
 - i. death or personal injury caused by its negligence, or the negligence of its employees, agents or subcontractors (as applicable);
 - ii. fraud or fraudulent misrepresentation;
 - iii. breach of the terms implied by section 12 of the Sale of Goods Act 1979;
 - iv. defective products under the Consumer Protection Act 1987; or
 - v. any matter in respect of which it would be unlawful for Us, to exclude or restrict liability.
- b. Subject to clause 13(a) Jonesco shall not be liable to You whether in contract, tort (including negligence) breach of statutory duty or otherwise, for any loss of profit, or any indirect or consequential loss arising under or in connection with the Contract, and which arise out of or in connection with the supply of the Goods or their use or resale by You, and Jonesco's total liability to the Customer in respect of all other losses arising under or in connection with the contract, whether in contract, tort (including negligence), breach of statutory duty or otherwise, shall not exceed the price paid of the Goods, except as expressly provided in these conditions;

14. SEVERANCE

- a. If any of the provisions (or part of any provision) of this contract are held to be invalid, illegal or unenforceable for any reason then the provision or part provision shall to the extent required, be read as if the invalid provisions had to that extent been deleted and the validity and enforceability of the remaining provisions of this contract shall not be affected thereby.
- b. If any invalid, unenforceable or illegal provision of the contract would be valid, enforceable and legal if some part of it were deleted, the provision shall apply with the minimum modification necessary to make it legal, valid and enforceable.

15. FORCE MAJEURE

We shall not be liable for any failure or delay in performing our obligations under the extent that such failure or delay is caused by a Force Majeure Event.

A Force Majeure Event means any event beyond our reasonable control, which by its nature could not have been foreseen or if it could have been foreseen, was unavoidable, including strike, lock-out, stoppage of work, or other industrial disputes (whether involving our own workforce or a third party's), failure of energy sources or transports network, riot, war, terrorism, civil commotion, interference by civil or military authorities, national or international calamity, armed conflict, malicious damage, breakdown of plant or machinery, nuclear, chemical or biological contamination, sonic boom, explosions, collapse of building structures, acts of God including, fires, floods, storms, earthquakes, loss at sea, epidemics or similar events, natural disasters or extreme adverse weather conditions, or default of suppliers or subcontractors, or defective materials.

16. TERMINATION

- a. If the Customer become subject to any of the events listed in clause 16(b), or We reasonably believe that You are about to become subject to any of them and notify You accordingly, then, without limiting any other right or remedy available to Jonesco, We may cancel or suspend all further deliveries under the Contract or under any other contract between the Customer and Jonesco without incurring any liability to the Customer, and all outstanding sums in respect of Goods delivered to the Customer shall become immediately due.

- b. For the purposes of clause 16(a), the relevant events are:
- i. (being a company) an application is made to court, an order is made, for the appointment of an administrative receiver You over all or part of your assets or undertaking;
 - ii. (being a company) a person becomes entitled to appoint a receiver over your or a receiver is appointed over your assets;
 - iii. a creditor or encumbrancer of your's attaches or takes possession of, or a distress, execution, sequestration or other such process is levied or enforced on or sued against, the whole or any part of your assets and such attachment or process is not discharged within 14 days
 - iv. You suspend or threaten to suspend payment of your debts or are unable to pay or admit or state your inability to pay your debts as they fall due; or (being a company) is deemed unable to pay its debts within the meaning of section 123 of the Insolvency Act 1986, or (being an individual) is deemed either unable to pay its debts or as having no reasonable prospect of so doing, in either case, within the meaning of section 268 of the Insolvency Act 1986, or (being a partnership) has any partner to whom any of the foregoing apply
 - v. You dispose or threaten to dispose of all or a material part of your assets whether by one or a series of transactions (Other than for the sole purpose of and followed by your reconstruction or amalgamation, approved by Jonesco);
 - vi. You commence negotiations with all or any class of your creditors with a view to rescheduling any of your debts, the Customer or make a proposal for or enter into any compromise, arrangement, voluntary arrangement or composition with your creditors;
 - vii. your directors make or state an intention to make or give notice of a proposal in relation to You for a voluntary arrangement under Part I of the Insolvency Act 1986;
 - viii. (being a company) a petition is filed, a notice is given, or any order is made, for or in connection with your winding-up or administration;
 - ix. (being a company) a resolution (other than for the sole purpose of and followed by your reconstruction or amalgamation, approved by Jonesco) is passed for your voluntary winding-up;
 - x. the Customer are dissolved;
 - xi. (being an individual) the Customer are the subject of a bankruptcy petition or order;
 - xii. the Customer suffer the levy or enforcement of any execution, distress, sequestration, detention or other process on the whole or part of any property or premises or other assets;
 - xiii. (being a company) an application is made to court, or an order is made, for the appointment of an administrator or if a notice of intention to appoint an administrator is given or if an administrator is appointed over the Customer;
 - xiv. (being a company) a floating charge holder over your assets has become entitled to appoint or has appointed an administrative receiver;
 - xv. any event occurs, or proceedings are taken, with respect to the Customer in any jurisdiction to which the Customer are subject that has an effect equivalent or similar to any of the events mentioned in clause 16(b)(i) to 16(b)(xv) (inclusive);
 - xvi. the Customer suspend, threaten to suspend, You cease or threaten to cease to carry on all or substantially the whole of your business trade;
your financial position deteriorates to such an extent that in our opinion your capability to adequately fulfil its obligations under the Contract has been placed in jeopardy; and
 - xvii. (being an individual) the Customer die or, by reason of illness or incapacity (whether mental or physical), are incapable of managing your own affairs or becomes a patient under any mental health legislation.
- c. Termination of the Contract, however arising, shall not affect any of the parties' rights and remedies that have accrued as at termination. Clauses which expressly or by implication survive termination of the Contract shall continue in full force and effect.

17. ASSIGNMENT AND SUBCONTRACTING

- a. We may at any time assign, transfer, charge, subcontract or deal in any other manner with all or any of our rights or obligations under the Contract.
- b. the Customer may not assign, transfer, charge, subcontract or deal in any other manner with all or any of your rights or obligations under the Contract without our prior written consent.

18. WAIVER

A waiver of any right or remedy under the contract is only effective if given in writing and shall not be deemed a waiver of any subsequent breach or default. No failure or delay by a party to exercise any right or remedy provided under the contract or by law shall constitute a waiver of that or any other right or remedy, nor shall it preclude or restrict the further exercise of that or any other right or remedy. No single or partial exercise of such right or remedy shall preclude or restrict the further exercise of that or any other right or remedy.

19. THIRD PARTY RIGHTS

A person who is not a party to the Contract shall not have any rights under or in connection with it.

20. JURISDICTION

This contract and any dispute or claim arising out of or in connection with it or its subject matter or formation (including non contractual disputes and claims) is governed by and construed in all respect by English Law and the Customer submits to the exclusive jurisdiction of the English Courts.

21. CUSTOMER CONDITIONS OF PURCHASE

In all instances Jonesco's Conditions of Sale stated herein override any separate Terms and Conditions of Purchase stated by Jonesco's customers.

22. VARIANCES TO STANDARD CONDITIONS OF SALE

We reserve the right to vary Jonesco's standard Conditions of Sale as stated herein. Any variation will be notified in writing to individual customers effected by these variances and will only apply in respect of goods purchased following such notification.

23. JONESCO CATALOGUES

Jonesco. All rights reserved. No part of this publication may be reproduced, stored in a retrieval system or transmitted in any form or by any means electronic, mechanical, photographic, recording or otherwise without the prior written permission of the publisher Jonesco (Preston) Ltd.



+44 (0) 1772 706888

www.jonesco-plastics.com

sales@jonesco-plastics.com

All rights reserved. No part of this publication may be reproduced, stored in a retrieval system or transmitted in any other form or by any means electronic, mechanical, photographic, recording or otherwise without the prior written permission of the publisher Jonesco (Preston) Ltd. We reserve the right to modify the specifications and ranges of the products illustrated in this catalogue without prior notice. All dimensions are nominal. The user is responsible for chemical compatibility. All deliveries according to our Conditions of Sale and Delivery. Jonesco (Preston) Ltd. Preston. 06.2019.v01

